

## Anti-PRMT6 antibody (1-375) (STJ110124)

### GENERAL INFORMATION

Product Type	Primary antibodies
Applications	WB/IF/ICC/ELISA
Host / Source	Rabbit
Reactivity	Human/Mouse

### PRODUCT PROPERTIES

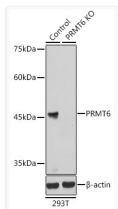
Clonality	Polyclonal
Concentration	Lot specific
Conjugation	Unconjugated
Purification	Affinity purification
Dilution Range	WB:1:500-1:2000 IF/CC:1:50-1:200 ELISA:Recommended starting concentration is 1 Mu g/mL. Please optimize the concentration based on your specific assay requirements.
Formulation	PBS with 0.09% Sodium Azide, 50% Glycerol, pH 7.3.
Isotype	IgG
Molecular Weight	Protein Mw: 42kDa Observed Mw: 42kDa
Storage Instruction	Store at -20°C for up to 1 year from the date of receipt, and avoid repeat freeze-thaw cycles.

### TARGET INFORMATION

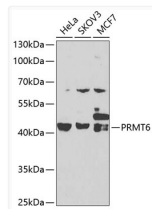
Gene ID	<a href="#">55170</a>
Gene Symbol	<a href="#">PRMT6</a>
UniProt ID	<a href="#">ANM6_HUMAN</a>
Immunogen Region	1-375
Immunogen Sequence	MSQPKKRKLESGGGGEGGEG TEEEDGAEREAALERPRRTK RERDQLYYECYSDVSVHEEM IADRVRTDAYRLGILRNWAA LRGKTVLDVGAGTGILSIFC AQAGARVYAYEASAIWQQA REVVRFNGLEDRVHVLPGPV ETVELPEQVDAIVSEWMGYG LLHESMLSSVLHARTKWLKE GGLLLPASAELFIAPISDQM LEWRLGFWSQVKQHYGVDMSCLEGFATRCLMGHSEIVVQ
Specificity	Recombinant fusion protein containing a sequence corresponding to amino acids 1-375 of human PRMT6 (NP_060607.2).

### ADDITIONAL INFORMATION

Note **STRICTLY FOR FURTHER SCIENTIFIC RESEARCH USE ONLY (RUO). MUST NOT TO BE USED IN DIAGNOSTIC OR THERAPEUTIC APPLICATIONS.**



Western blot analysis of lysates from wild type (WT) and PRMT6 knockout (KO) 293T cells, using [KO Validated] PRMT6 Rabbit polyclonal antibody (STJ110124) at 1:1000 dilution. Secondary antibody: HRP Goat Anti-Rabbit IgG (H+L) (STJS000856) at 1:10000 dilution. Lysates/proteins: 25 Mu g per lane. Blocking buffer: 3% nonfat dry milk in TBST. Detection: ECL Basic Kit. Exposure time: 5s.



Western blot analysis of various lysates using [KO Validated] PRMT6 Rabbit polyclonal antibody (STJ110124) at 1:1000 dilution. Secondary antibody: HRP Goat Anti-Rabbit IgG (H+L) (STJS000856) at 1:10000 dilution. Lysates/proteins: 25 Mu g per lane. Blocking buffer: 3% nonfat dry milk in TBST. Detection: ECL Basic Kit. Exposure time: 90s.