

## Anti-PHF11 antibody (1-292) (STJ110113)

### GENERAL INFORMATION

Product Type	Primary antibodies
Applications	WB/IHC-P/IF/ICC/ELISA
Host / Source	Rabbit
Reactivity	Human/Mouse/Rat

### PRODUCT PROPERTIES

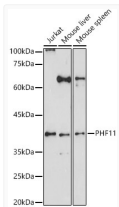
Clonality	Polyclonal
Concentration	Lot specific
Conjugation	Unconjugated
Purification	Affinity purification
Dilution Range	WB:1:500-1:1000 IHC-P:1:50-1:200 IF/CC:1:50-1:200 ELISA:Recommended starting concentration is 1 Mu g/mL. Please optimize the concentration based on your specific assay requirements.
Formulation	PBS with 0.02% Sodium Azide, 50% Glycerol, pH 7.3.
Isotype	IgG
Molecular Weight	Protein Mw: 38kDa Observed Mw: 38kDa
Storage Instruction	Store at -20°C for up to 1 year from the date of receipt, and avoid repeat freeze-thaw cycles.

### TARGET INFORMATION

Gene ID	<a href="#">51131</a>
Gene Symbol	<a href="#">PHF11</a>
UniProt ID	<a href="#">PHF11_HUMAN</a>
Immunogen Region	1-292
Immunogen Sequence	MAQASPPRPERVLGASSPEA RPAQEALLPTGVFQVAEKM EKRTCALCPKDVEYNVLYFA QSENIAAHENCLLYSSGLVE CEDQDPLNPDRSFDVESVKK EIQRGRKCLKCFCHKRGATV GCDLKNCKNYHFFCAKKDD AVPQSDGVRGIYKLLCQQHA QFPIIAQSAKFSGVKPKRGR KKPLSGNHVQPPEMCKCNTF IRQVKEEHGRHTDATVKVPF LKKCKEAGLLNYLLEEILD
Specificity	Recombinant fusion protein containing a sequence corresponding to amino acids 1-292 of human PHF11 (NP_001035533.1).

### ADDITIONAL INFORMATION

Note STRICTLY FOR FURTHER SCIENTIFIC RESEARCH USE ONLY (RUO). MUST NOT TO BE USED IN DIAGNOSTIC OR THERAPEUTIC APPLICATIONS.



Western blot analysis of various lysates using PHF11 Rabbit polyclonal antibody (STJ110113) at 1:1000 dilution. Secondary antibody: HRP Goat Anti-Rabbit IgG (H+L) (STJS000856) at 1:10000 dilution. Lysates/proteins: 25 Mu g per lane. Blocking buffer: 3% nonfat dry milk in TBST. Detection: ECL Enhanced Kit. Exposure time: 30s.