

Anti-SAMHD1 antibody (387-626) (STJ110104)

GENERAL INFORMATION

Product Type	Primary antibodies
Applications	WB/IHC-P/IP/ELISA
Host / Source	Rabbit
Reactivity	Human/Mouse/Rat

PRODUCT PROPERTIES

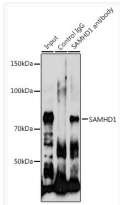
Clonality	Polyclonal
Concentration	Lot specific
Conjugation	Unconjugated
Purification	Affinity purification
Dilution Range	WB:1:500-1:2000 IHC-P:1:50-1:200 IP:0.5 Mu g-4 Mu g antibody for 200 Mu g-400 Mu g extracts of whole cells ELISA:Recommended starting concentration is 1 Mu g/mL. Please optimize the concentration based on your specific assay requirements.
Formulation	PBS with 0.02% Sodium Azide, 50% Glycerol, pH 7.3.
Isotype	IgG
Molecular Weight	Protein Mw: 72kDa Observed Mw: 72kDa
Storage Instruction	Store at -20°C for up to 1 year from the date of receipt, and avoid repeat freeze-thaw cycles.

TARGET INFORMATION

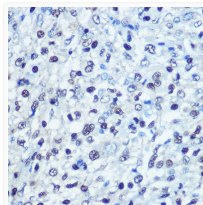
Gene ID	25939
Gene Symbol	SAMHD1
UniProt ID	SAMH1_HUMAN
Immunogen Region	387-626
Immunogen Sequence	TDAFLKADDYIEITGAGGKK YRISTAIDMEAYTKLTDNI FLEILYSTDPKPKDAREILK QIEYRNLFKYVGETQPTGQI KIKREDYESLPKEVASAKPK VLLDVKLKAEDFIVDVINMD YGMQEKNPIDHVSFYCKTAP NRAIRITKNQVSQLLPEKFA EQLIRVYCKKVDKSLYAAR QYFVQWCADRNFTEKPDGDV IAPLITPQKKEWNDSTSVQN PTRLREASKSRVQLFKDDP
Specificity	Recombinant fusion protein containing a sequence corresponding to amino acids 387-626 of human SAMHD1 (NP_056289.2).

ADDITIONAL INFORMATION

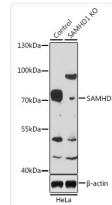
Note	STRICTLY FOR FURTHER SCIENTIFIC RESEARCH USE ONLY (RUO). MUST NOT TO BE USED IN DIAGNOSTIC OR THERAPEUTIC APPLICATIONS.
------	---



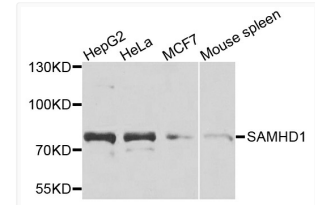
Immunoprecipitation analysis of 200 Mu g extracts of HeLa cells using 3 Mu g SAMHD1 antibody (STJ110104). Western blot was performed from the immunoprecipitate using SAMHD1 antibody (STJ110104) at a dilution of 1:1000.



Immunohistochemistry analysis of SAMHD1 in paraffin-embedded human liver cancer using [KO Validated] SAMHD1 Rabbit polyclonal antibody (STJ110104) at dilution of 1:100 (40x lens). Perform microwave antigen retrieval with 10 mM PBS buffer pH 7.2 before commencing with immunohistochemistry staining protocol.



Western blot analysis of lysates from wild type (WT) and SAMHD1 knockout (KO) HeLa cells, using [KO Validated] SAMHD1 Rabbit polyclonal antibody (STJ110104) at 1:1000 dilution. Secondary antibody: HRP Goat Anti-Rabbit IgG (H+L) (STJS000856) at 1:10000 dilution. Lysates/proteins: 25 Mu g per lane. Blocking buffer: 3% nonfat dry milk in TBST. Detection: ECL Basic Kit. Exposure time: 3min.



Western blot analysis of various lysates using [KO Validated] SAMHD1 Rabbit polyclonal antibody (STJ110104) at 1:1000 dilution. Secondary antibody: HRP Goat Anti-Rabbit IgG (H+L) (STJS000856) at 1:10000 dilution. Lysates/proteins: 25 Mu g per lane. Blocking buffer: 3% nonfat dry milk in TBST. Detection: ECL Basic Kit. Exposure time: 90s.