

Anti-RPL36 antibody (1-105) (STJ110103)

GENERAL INFORMATION

Product Type	Primary antibodies
Applications	WB/IHC-P/IF/ICC/ELISA
Host / Source	Rabbit
Reactivity	Human/Mouse/Rat

PRODUCT PROPERTIES

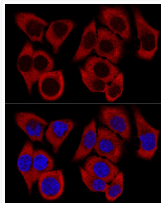
Clonality	Polyclonal
Concentration	Lot specific
Conjugation	Unconjugated
Purification	Affinity purification
Dilution Range	WB:1:500-1:2000 IHC-P:1:50-1:200 IF/ICC:1:50-1:200 ELISA:Recommended starting concentration is 1 μ g/mL. Please optimize the concentration based on your specific assay requirements.
Formulation	PBS with 0.02% Sodium Azide, 50% Glycerol, pH 7.3.
Isotype	IgG
Molecular Weight	Protein Mw: 12kDa Observed Mw: 15kDa
Storage Instruction	Store at -20°C for up to 1 year from the date of receipt, and avoid repeat freeze-thaw cycles.

TARGET INFORMATION

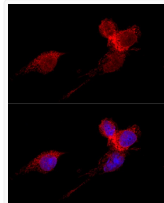
Gene ID	25873
Gene Symbol	RPL36
UniProt ID	RL36_HUMAN
Immunogen Region	1-105
Immunogen Sequence	MALRYPMVGLNKGHKVTKN VSKPRHSRRRGRRLTKHTKFV RDMIREVCGFAPYERRAMEL LKVSKDKRALFKIKRVGTH IRAKRKREELSNVLAAMRKA AAKKD
Specificity	Recombinant fusion protein containing a sequence corresponding to amino acids 1-105 of human RPL36 (NP_056229.2).

ADDITIONAL INFORMATION

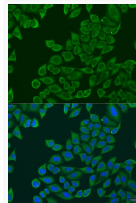
Note **STRICTLY FOR FURTHER SCIENTIFIC RESEARCH USE ONLY (RUO). MUST NOT TO BE USED IN DIAGNOSTIC OR THERAPEUTIC APPLICATIONS.**



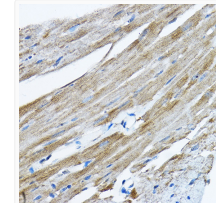
Confocal immunofluorescence analysis of HeLa cells using RPL36 Polyclonal Antibody (STJ110103) at dilution of 1:200. Blue: DAPI for nuclear staining.



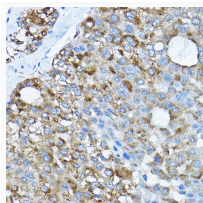
Confocal immunofluorescence analysis of HeLa cells using RPL36 antibody (STJ110103) at dilution of 1:200. Blue: DAPI for nuclear staining.



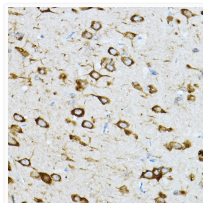
Immunofluorescence analysis of U2OS cells using RPL36 antibody (STJ110103) at dilution of 1:100. Blue: DAPI for nuclear staining.



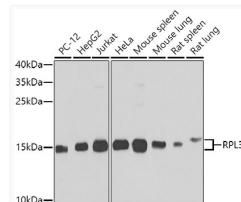
Immunohistochemistry analysis of paraffin-embedded mouse heart using RPL36 Rabbit polyclonal antibody (STJ110103) at dilution of 1:200 (40x lens). Perform high pressure antigen retrieval with 10 mM citrate buffer pH 6.0 before commencing with immunohistochemistry staining protocol.



Immunohistochemistry analysis of paraffin-embedded human liver cancer using RPL36 Rabbit polyclonal antibody (STJ110103) at dilution of 1:200 (40x lens). Perform high pressure antigen retrieval with 10 mM citrate buffer pH 6.0 before commencing with immunohistochemistry staining protocol.



Immunohistochemistry analysis of paraffin-embedded rat brain using RPL36 Rabbit polyclonal antibody (STJ110103) at dilution of 1:200 (40x lens). Perform high pressure antigen retrieval with 10 mM citrate buffer pH 6.0 before commencing with immunohistochemistry staining protocol.



Western blot analysis of extracts of various cell lines, using RPL36 antibody (STJ110103) at 1:1000 dilution. Secondary antibody: HRP Goat Anti-Rabbit IgG (H+L) (STJS000856) at 1:10000 dilution. Lysates/proteins: 25 μ g per lane. Blocking buffer: 3% nonfat dry milk in TBST. Detection: ECL Basic Kit. Exposure time: 10s.