

## Anti-SUZ12 antibody (470-739) (STJ110096)

### GENERAL INFORMATION

Product Type	Primary antibodies
Applications	WB/IF/ICC/IP/ELISA
Host / Source	Rabbit
Reactivity	Human/Mouse/Rat

### PRODUCT PROPERTIES

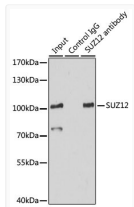
Clonality	Polyclonal
Concentration	Lot specific
Conjugation	Unconjugated
Purification	Affinity purification
Dilution Range	WB:1:500-1:2000 IF/CC:1:50-1:100 IP:0.5 Mu g-4 Mu g antibody for 200 Mu g-400 Mu g extracts of whole cells ELISA:Recommended starting concentration is 1 Mu g/mL. Please optimize the concentration based on your specific assay requirements
Formulation	PBS with 0.02% Sodium Azide, 50% Glycerol, pH 7.3.
Isotype	IgG
Molecular Weight	Protein Mw: 83kDa Observed Mw: 83kDa
Storage Instruction	Store at -20°C for up to 1 year from the date of receipt, and avoid repeat freeze-thaw cycles.

### TARGET INFORMATION

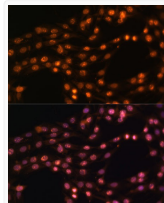
Gene ID	<a href="#">23512</a>
Gene Symbol	<a href="#">SUZ12</a>
UniProt ID	<a href="#">SUZ12_HUMAN</a>
Immunogen Region	470-739
Immunogen Sequence	CHSRFIFNYVYHPK GARIDV SINECYDGSYAGNPQDIHRQ PGFAFSRNGPVK RTPITHIL VCRPKRTKASMSEFLESE DG EVEQRTYSSGHNRLYFHSD TCLPLRPQEMVEVDSEDEKDP EWLREKTITQIEEFSDVNEG EKEVMKLVNHLVHMKHGFIAD NQMNHACMLFVENYGGQKIIK KNLCRNFMLHLVSMHDFNLI SIMSIDKAVTKLREMQQKLE KGESASPANEEITEEQNGT
Specificity	Recombinant fusion protein containing a sequence corresponding to amino acids 470-739 of human SUZ12 (NP_056170.2).

### ADDITIONAL INFORMATION

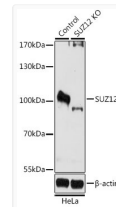
Note STRICTLY FOR FURTHER SCIENTIFIC RESEARCH USE ONLY (RUO). MUST NOT TO BE USED IN DIAGNOSTIC OR THERAPEUTIC APPLICATIONS.



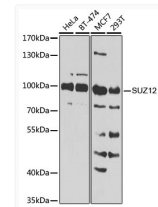
Immunoprecipitation analysis of 200 Mu g extracts of HeLa cells using 3 Mu g SUZ12 antibody (STJ110096). Western blot was performed from the immunoprecipitate using SUZ12 antibody (STJ110096) at a dilution of 1:500.



Immunofluorescence analysis of C6 cells using [KO Validated] SUZ12 Rabbit polyclonal antibody (STJ110096) at dilution of 1:100 (40x lens). Secondary antibody: Cy3 Goat Anti-Rabbit IgG (H+L) at 1:500 dilution. Blue: DAPI for nuclear staining.



Western blot analysis of lysates from wild type (WT) and SUZ12 knockout (KO) HeLa cells, using [KO Validated] SUZ12 Rabbit polyclonal antibody (STJ110096) at 1:1000 dilution. Secondary antibody: HRP Goat Anti-Rabbit IgG (H+L) (STJS000856) at 1:10000 dilution. Lysates/proteins: 25 Mu g per lane. Blocking buffer: 3% nonfat dry milk in TBST. Detection: ECL Basic Kit. Exposure time: 90s.



Western blot analysis of various lysates using [KO Validated] SUZ12 Rabbit polyclonal antibody (STJ110096) at 1:1000 dilution. Secondary antibody: HRP Goat Anti-Rabbit IgG (H+L) (STJS000856) at 1:10000 dilution. Lysates/proteins: 25 Mu g per lane. Blocking buffer: 3% nonfat dry milk in TBST. Detection: ECL Basic Kit. Exposure time: 90s.