

Anti-WDR6 antibody (800-1000) (STJ110090)

GENERAL INFORMATION

Product Type	Primary antibodies
Applications	WB/IF/ICC/ELISA
Host / Source	Rabbit
Reactivity	Human/Mouse

PRODUCT PROPERTIES

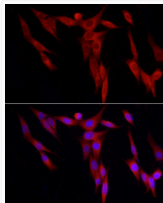
Clonality	Polyclonal
Concentration	Lot specific
Conjugation	Unconjugated
Purification	Affinity purification
Dilution Range	WB:1:500-1:1000 IF/CC:1:50-1:200 ELISA:Recommended starting concentration is 1 μ g/mL. Please optimize the concentration based on your specific assay requirements.
Formulation	PBS with 0.05% Proclin300, 50% Glycerol, pH 7.3.
Isotype	IgG
Molecular Weight	Protein Mw: 122kDa Observed Mw: 122kDa
Storage Instruction	Store at -20°C for up to 1 year from the date of receipt, and avoid repeat freeze-thaw cycles.

TARGET INFORMATION

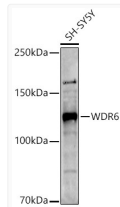
Gene ID	11180
Gene Symbol	WDR6
UniProt ID	WDR6_HUMAN
Immunogen Region	800-1000
Immunogen Sequence	VCNHISSVRVAVWVGITPG GPQDPQPGLTAHVVSAGGRA EMHCFSIMVTPDPSTPSRLA CHVMHLSSHRLDEYWDRQRN RHRMVKVDPETRYMSLAVCE LDQPLGLPLVAAACSDGAVR LFLQDSGRILQLLAETFHH KRCVLKVHSFTHEAPNQRRR LLLCSAATDGSALFWDLTMM LDHDSTVLEPPVDPGLPYRL G
Specificity	Recombinant fusion protein containing a sequence corresponding to amino acids 800-1000 of human WDR6 (NP_060501.3).

ADDITIONAL INFORMATION

Note **STRICTLY FOR FURTHER SCIENTIFIC RESEARCH USE ONLY (RUO). MUST NOT TO BE USED IN DIAGNOSTIC OR THERAPEUTIC APPLICATIONS.**



Immunofluorescence analysis of NIH/3T3 cells using WDR6 Rabbit polyclonal antibody (STJ110090) at dilution of 1:200 (40x lens). Secondary antibody: Cy3 Goat Anti-Rabbit IgG (H+L) at 1:500 dilution. Blue: DAPI for nuclear staining.



Western blot analysis of lysates from SH-SY5Y cells, using WDR6 Rabbit polyclonal antibody (STJ110090) at 1:1000 dilution. Secondary antibody: HRP Goat Anti-Rabbit IgG (H+L) (STJS000856) at 1:10000 dilution. Lysates/proteins: 25 μ g per lane. Blocking buffer: 3% nonfat dry milk in TBST. Detection: ECL Basic Kit. Exposure time: 180s.