

Anti-CFHR3 antibody (80-200) (STJ110086)

GENERAL INFORMATION

Product Type	Primary antibodies
Applications	WB/IF/ICC/ELISA
Host / Source	Rabbit
Reactivity	Human/Mouse/Rat

PRODUCT PROPERTIES

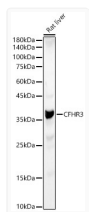
Clonality	Polyclonal
Concentration	Lot specific
Conjugation	Unconjugated
Purification	Affinity purification
Dilution Range	WB:1:500-1:1000 IF/CC:1:50-1:200 ELISA:Recommended starting concentration is 1 μ g/mL. Please optimize the concentration based on your specific assay requirements.
Formulation	PBS with 0.05% Proclin300, 50% Glycerol, pH7.3.
Isotype	IgG
Molecular Weight	Protein Mw: 37kDa Observed Mw: 37kDa
Storage Instruction	Store at -20°C for up to 1 year from the date of receipt, and avoid repeat freeze-thaw cycles.

TARGET INFORMATION

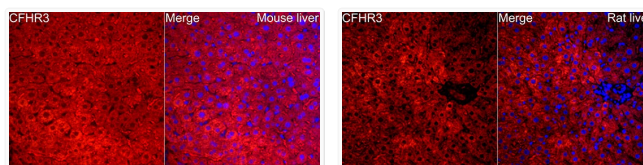
Gene ID	10878
Gene Symbol	CFHR3
UniProt ID	FHR3_HUMAN
Immunogen Region	80-200
Immunogen Sequence	AVPCLRKCYFPYLENGYNQN YGRKFVQGNSTEVACHPGYG LPKAQTTVTCTEKGWSPTPR CIRVRTCSKSDIEIENGFISSSIYILNKEIQYKCKPGY ATADGNSSGSITCLQNGWSA Q
Specificity	Recombinant fusion protein containing a sequence corresponding to amino acids 80-200 of human CFHR3 (NP_066303.2).

ADDITIONAL INFORMATION

Note STRICTLY FOR FURTHER SCIENTIFIC RESEARCH USE ONLY (RUO). MUST NOT TO BE USED IN DIAGNOSTIC OR THERAPEUTIC APPLICATIONS.



Western blot analysis of Rat liver, using CFHR3 rabbit polyclonal antibody (STJ110086) at 1:1000 dilution. Secondary antibody: HRP Goat Anti-rabbit IgG (H+L) (STJS000856) at 1:10000 dilution. Lysates/proteins: 25 μ g per lane. Blocking buffer: 3% non-fat dry milk in TBST. Detection: ECL Basic Kit. Exposure time: 30s.



Perform high pressure antigen retrieval with 10 mM citrate buffer pH 6. 0 before commencing with IF staining protocol. Immunofluorescence analysis of mouse liver cells using CFHR3 rabbit polyclonal antibody (STJ110086) at dilution of 1:200 (40x lens). Blue: DAPI for nuclear staining.

Perform high pressure antigen retrieval with 10 mM citrate buffer pH 6. 0 before commencing with IF staining protocol. Immunofluorescence analysis of rat liver cells using CFHR3 rabbit polyclonal antibody (STJ110086) at dilution of 1:200 (40x lens). Blue: DAPI for nuclear staining.