

## Anti-SQSTM1 antibody (1-440) (STJ110069)

### GENERAL INFORMATION

Product Type	Primary antibodies
Applications	WB/IHC-P/IF/ICC/ELISA
Host / Source	Rabbit
Reactivity	Human/Mouse/Rat

### PRODUCT PROPERTIES

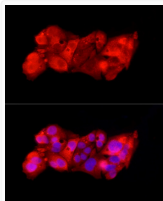
Clonality	Polyclonal
Concentration	Lot specific
Conjugation	Unconjugated
Purification	Affinity purification
Dilution Range	WB:1:1000-1:5000 IHC-P:1:50-1:200 IF/ICC:1:50-1:200 ELISA:Recommended starting concentration is 1 $\mu$ g/mL. Please optimize the concentration based on your specific assay requirements.
Formulation	PBS with 0.05% Proclin300, 50% Glycerol, pH 7.3.
Isotype	IgG
Molecular Weight	Protein Mw: 48kDa Observed Mw: 62kDa
Storage Instruction	Store at -20°C for up to 1 year from the date of receipt, and avoid repeat freeze-thaw cycles.

### TARGET INFORMATION

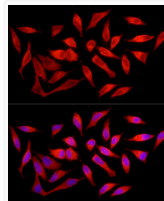
Gene ID	<a href="#">8878</a>
Gene Symbol	<a href="#">SQSTM1</a>
UniProt ID	<a href="#">SQSTM_HUMAN</a>
Immunogen Region	1-440
Immunogen Sequence	MASLTVKAYLLGKEDAAREI RRFSCCSPEPEAEAEAAAG GPCEERLLSRVAALFPAALRP GGFQAHYRDEDDGLVAFSSD EELTMAMSYVKDDIFRIYIK EKKECRRDHRPPCAQEAPRN MVHPNVICDGCNGPVVGTRY KCSVCPDYDLOSVCCEGKGLH RGHTKLAFPPSPFGHLSEGFS HSRWLRKVKHGHFGWPGWEM GPPGNWSPRPPRAGEARPGP TAESASGSPSEDPSVNFLKN
Specificity	Recombinant fusion protein containing a sequence corresponding to amino acids 1-440 of human SQSTM1/p62 (NP_003891.1).

### ADDITIONAL INFORMATION

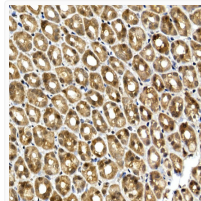
Note STRICTLY FOR FURTHER SCIENTIFIC RESEARCH USE ONLY (RUO). MUST NOT TO BE USED IN DIAGNOSTIC OR THERAPEUTIC APPLICATIONS.



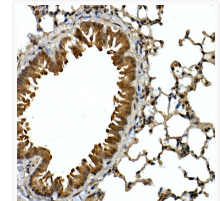
Immunofluorescence analysis of HepG2 cells using SQSTM1/p62 Rabbit polyclonal antibody (STJ110069) at dilution of 1:100 (40x lens). Secondary antibody: Cy3 Goat Anti-Rabbit IgG (H+L) at 1:500 dilution. Blue: DAPI for nuclear staining.



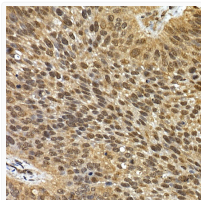
Immunofluorescence analysis of HeLa cells using SQSTM1/p62 Rabbit polyclonal antibody (STJ110069) at dilution of 1:100 (40x lens). Secondary antibody: Cy3 Goat Anti-Rabbit IgG (H+L) at 1:500 dilution. Blue: DAPI for nuclear staining.



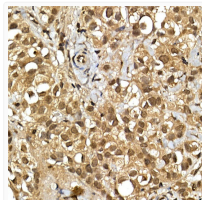
Immunohistochemistry analysis of SQSTM1/p62 in paraffin-embedded rat stomach using SQSTM1/p62 Rabbit polyclonal antibody (STJ110069) at dilution of 1:100 (40x lens). Perform high pressure antigen retrieval with 10 mM citrate buffer pH 6. 0 before commencing with immunohistochemistry staining protocol.



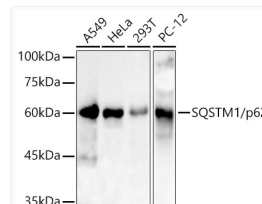
Immunohistochemistry analysis of SQSTM1/p62 in paraffin-embedded mouse lung using SQSTM1/p62 Rabbit polyclonal antibody (STJ110069) at dilution of 1:100 (40x lens). Perform high pressure antigen retrieval with 10 mM citrate buffer pH 6. 0 before commencing with immunohistochemistry staining protocol.



Immunohistochemistry analysis of SQSTM1/p62 in paraffin-embedded human lung cancer using SQSTM1/p62 Rabbit polyclonal antibody (STJ110069) at dilution of 1:100 (40x lens). Perform high pressure antigen retrieval with 10 mM citrate buffer pH 6. 0 before commencing with immunohistochemistry staining protocol.



Immunohistochemistry analysis of SQSTM1/p62 in paraffin-embedded human breast cancer using SQSTM1/p62 Rabbit polyclonal antibody (STJ110069) at dilution of 1:100 (40x lens). Perform high pressure antigen retrieval with 10 mM citrate buffer pH 6. 0 before commencing with immunohistochemistry staining protocol.



Western blot analysis of various lysates using SQSTM1/p62 Rabbit polyclonal antibody (STJ110069) at 1:3000 dilution. Secondary antibody: HRP Goat Anti-Rabbit IgG (H+L) (STJS000856) at 1:10000 dilution. Lysates/proteins: 25  $\mu$ g per lane. Blocking buffer: 3% nonfat dry milk in TBST. Detection: ECL Basic Kit. Exposure time: 3s.