

## Anti-ADAM15 antibody (540-700) (STJ110067)

### GENERAL INFORMATION

Product Type	Primary antibodies
Applications	WB/IF/ICC/ELISA
Host / Source	Rabbit
Reactivity	Human/Mouse/Rat

### PRODUCT PROPERTIES

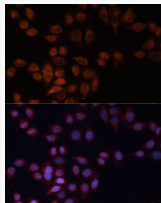
Clonality	Polyclonal
Concentration	Lot specific
Conjugation	Unconjugated
Purification	Affinity purification
Dilution Range	WB:1:500-1:2000 IF/CC:1:50-1:200 ELISA:Recommended starting concentration is 1 µg/mL. Please optimize the concentration based on your specific assay requirements.
Formulation	PBS with 0.02% Sodium Azide, 50% Glycerol, pH 7.3.
Isotype	IgG
Molecular Weight	Protein Mw: 93kDa Observed Mw: 93kDa
Storage Instruction	Store at -20°C for up to 1 year from the date of receipt, and avoid repeat freeze-thaw cycles.

### TARGET INFORMATION

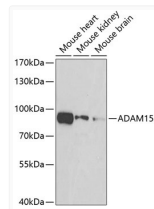
Gene ID	<a href="#">8751</a>
Gene Symbol	<a href="#">ADAM15</a>
UniProt ID	<a href="#">ADA15_HUMAN</a>
Immunogen Region	540-700
Immunogen Sequence	QPAAPLCLQTANTRGNAFGS CGRNPSGSYVCTPRDAICG QLQCQTGRTPQLLGSIRDLL WETIDVNGTELNCSSWVHLDL GSDVAQPLLTLPGTACGPGI VCDHRCQRVDLLGAQECRS KCHGHGVCDNSNRHCYCEEGW APPDCTTQLKATSSLTGLL L
Specificity	Recombinant fusion protein containing a sequence corresponding to amino acids 540-700 of human ADAM15 (NP_003806.3).

### ADDITIONAL INFORMATION

Note **STRICTLY FOR FURTHER SCIENTIFIC RESEARCH USE ONLY (RUO). MUST NOT TO BE USED IN DIAGNOSTIC OR THERAPEUTIC APPLICATIONS.**



Immunofluorescence analysis of HeLa cells using ADAM15 Polyclonal Antibody (STJ110067) at dilution of 1:100 (40x lens). Blue: DAPI for nuclear staining.



Western blot analysis of extracts of various cell lines, using ADAM15 antibody (STJ110067) at 1:500 dilution. Secondary antibody: HRP Goat Anti-Rabbit IgG (H+L) (STJS000856) at 1:10000 dilution. Lysates/proteins: 25 µg per lane. Blocking buffer: 3% nonfat dry milk in TBST. Detection: ECL Basic Kit. Exposure time: 90s.