

## Anti-TTF2 antibody (1-270) (STJ110062)

### GENERAL INFORMATION

Product Type	Primary antibodies
Applications	WB/IF/ICC/ELISA
Host / Source	Rabbit
Reactivity	Human

### PRODUCT PROPERTIES

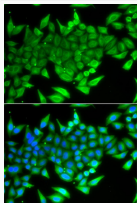
Clonality	Polyclonal
Concentration	Lot specific
Conjugation	Unconjugated
Purification	Affinity purification
Dilution Range	WB:1:500-1:2000 IF/CC:1:50-1:200 ELISA:Recommended starting concentration is 1 Mu g/mL. Please optimize the concentration based on your specific assay requirements.
Formulation	PBS with 0.02% Sodium Azide, 50% Glycerol, pH 7.3.
Isotype	IgG
Molecular Weight	Protein Mw: 130kDa Observed Mw: 130kDa
Storage Instruction	Store at -20°C for up to 1 year from the date of receipt, and avoid repeat freeze-thaw cycles.

### TARGET INFORMATION

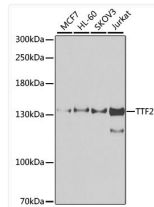
Gene ID	<a href="#">8458</a>
Gene Symbol	<a href="#">TTF2</a>
UniProt ID	<a href="#">TTF2_HUMAN</a>
Immunogen Region	1-270
Immunogen Sequence	MEEVRCPEHGTFCFLKTGVR DGNPKGKSFYVCRADTCSFV RATDIPVSHCLLHEDFVVEL QGLLLPQDKKEYRLFFRCIR SKAEGKRWCGSIPWQDPDSK EHSVSNKSHASETFHHSSN WLRNPFKVL DKNQEPALWKQ LIKGE GEEKKADKKQREKGD QLFDQKKEQKPEMMEKDLSS GLVPK KKSQSVVQEKKQEEGA EIQC EAETGGTHKRDFSEIK SQQCQGNELTRPSASSQEK
Specificity	Recombinant fusion protein containing a sequence corresponding to amino acids 1-270 of human TTF2 (NP_003585.3).

### ADDITIONAL INFORMATION

Note STRICTLY FOR FURTHER SCIENTIFIC RESEARCH USE ONLY (RUO). MUST NOT TO BE USED IN DIAGNOSTIC OR THERAPEUTIC APPLICATIONS.



Immunofluorescence analysis of A549 cells using TTF2 antibody (STJ110062). Blue: DAPI for nuclear staining.



Western blot analysis of extracts of various cell lines, using TTF2 antibody (STJ110062) at 1:1000 dilution. Secondary antibody: HRP Goat Anti-Rabbit IgG (H+L) (STJS000856) at 1:10000 dilution. Lysates/proteins: 25 Mu g per lane. Blocking buffer: 3% nonfat dry milk in TBST. Detection: ECL Enhanced Kit. Exposure time: 30s.