

Anti-SULT2B1 antibody (1-365) (STJ110047)

GENERAL INFORMATION

Product Type	Primary antibodies
Applications	WB/IF/ICC/ELISA
Host / Source	Rabbit
Reactivity	Human/Mouse/Rat

PRODUCT PROPERTIES

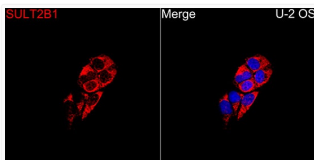
Clonality	Polyclonal
Concentration	Lot specific
Conjugation	Unconjugated
Purification	Affinity purification
Dilution Range	WB:1:500-1:2000 IF/ICC:1:50-1:100 ELISA:Recommended starting concentration is 1 μ g/mL. Please optimize the concentration based on your specific assay requirements.
Formulation	PBS with 0.02% Sodium Azide, 50% Glycerol, pH 7.3.
Isotype	IgG
Molecular Weight	Protein Mw: 41kDa Observed Mw: 42kDa
Storage Instruction	Store at -20°C for up to 1 year from the date of receipt, and avoid repeat freeze-thaw cycles.

TARGET INFORMATION

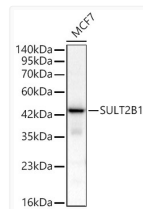
Gene ID	6820
Gene Symbol	SULT2B1
UniProt ID	ST2B1_HUMAN
Immunogen Region	1-365
Immunogen Sequence	MDGPAEPQIPGLWDTYEDDI SEISQKLPGEYFRYKGVFPF VGLYSLESISLAENTQDVRD DDIFIITYPKSGTTWMIEII CLILKEGDPSPWIRSVPIWER APWCETIVGAFSLPDQYSPR LMSHSLPIQIFTKAFSSKA KVIYMGRNPRDVVVSLYHYS KIAGQLKDPGTPDQFLRDFL KGEVQFGS WFDHIKGWLRMK GKDNFLFITYEELQQDLQGS VERICGFLGRPLGKEALGS
Specificity	Recombinant fusion protein containing a sequence corresponding to amino acids 1-365 of human SULT2B1 (NP_814444.1).

ADDITIONAL INFORMATION

Note STRICTLY FOR FURTHER SCIENTIFIC RESEARCH USE ONLY (RUO). MUST NOT TO BE USED IN DIAGNOSTIC OR THERAPEUTIC APPLICATIONS.



Immunofluorescence analysis of U-2 OS cells using SULT2B1 Rabbit polyclonal antibody (STJ110047) at a dilution of 1:100 (40x lens). Secondary antibody: Cy3 Goat Anti-Rabbit IgG (H+L) at 1:500 dilution. Blue: DAPI for nuclear staining.



Western blot analysis of lysates from MCF7 cells using SULT2B1 Rabbit polyclonal antibody (STJ110047) at 1:1000 dilution. Secondary antibody: STJS000856 at 1:10000 dilution. Lysates/proteins: 25 μ g per lane. Blocking buffer: 3% nonfat dry milk in TBST. Detection: ECL Basic Kit. Exposure time: 10s.