

Anti-PRKACG antibody (1-351) (STJ110026)

GENERAL INFORMATION

Product Type	Primary antibodies
Applications	WB/ELISA
Host / Source	Rabbit
Reactivity	Human/Mouse/Rat

PRODUCT PROPERTIES

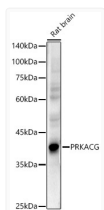
Clonality	Polyclonal
Concentration	Lot specific
Conjugation	Unconjugated
Purification	Affinity purification
Dilution Range	WB:1:100-1:500 ELISA:Recommended starting concentration is 1 Mu g/mL. Please optimize the concentration based on your specific assay requirements.
Formulation	PBS with 0.05% Proclin300, 50% Glycerol, pH 7.3.
Isotype	IgG
Molecular Weight	Protein Mw: 40kDa Observed Mw: 40kDa
Storage Instruction	Store at -20°C for up to 1 year from the date of receipt, and avoid repeat freeze-thaw cycles.

TARGET INFORMATION

Gene ID	5568
Gene Symbol	PRKACG
UniProt ID	KAPCG_HUMAN
Immunogen Region	1-351
Immunogen Sequence	MGNAPAKKDTEQEESVNEFL AKARGDFLYRWGNAQNTAS SDQFERLRTLGMGSFGRVML VRHQETGGHYAMKILNKQKV VKMKQVEHILNEKRILQAID FPFLVKLQFSFKDNSYLYLV MEYVPGGEMFSRLQRVGRFS EPHACFYAAQVVLAVQYLHS LDLIHRDLKPENLLIDQQGY LQVTDGFGFAKRVKGRWTWLC GTPEYLAPEIILSKGYNKAV DWWALGVLIYEMAVGFPPF
Specificity	A synthetic peptide corresponding to a sequence within amino acids 1-351 of human PRKACG (NP_002723.2).

ADDITIONAL INFORMATION

Note STRICTLY FOR FURTHER SCIENTIFIC RESEARCH USE ONLY (RUO). MUST NOT TO BE USED IN DIAGNOSTIC OR THERAPEUTIC APPLICATIONS.



Western blot analysis of extracts of Rat brain, using PRKACG antibody (STJ110026) at 1:500 dilution. Secondary antibody: HRP Goat Anti-Rabbit IgG (H+L) (STJS000856) at 1:10000 dilution. Lysates/proteins: 25 Mu g per lane. Blocking buffer: 3% nonfat dry milk in TBST. Detection: ECL Enhanced Kit. Exposure time: 60s.