

Anti-PGD antibody (184-483) (STJ110021)

GENERAL INFORMATION

Product Type	Primary antibodies
Applications	WB/IHC-P/IF/ICC/ELISA
Host / Source	Rabbit
Reactivity	Human/Mouse/Rat

PRODUCT PROPERTIES

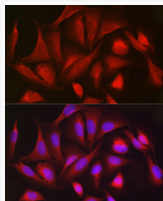
Clonality	Polyclonal
Concentration	Lot specific
Conjugation	Unconjugated
Purification	Affinity purification
Dilution Range	WB:1:500-1:2000 IHC-P:1:50-1:200 IF/CC:1:50-1:200 ELISA:Recommended starting concentration is 1 Mu g/mL. Please optimize the concentration based on your specific assay requirements.
Formulation	PBS with 0.02% Sodium Azide, 50% Glycerol, pH 7.3.
Isotype	IgG
Molecular Weight	Protein Mw: 53kDa Observed Mw: 46kDa
Storage Instruction	Store at -20°C for up to 1 year from the date of receipt, and avoid repeat freeze-thaw cycles.

TARGET INFORMATION

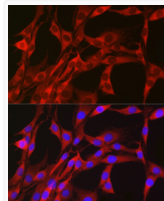
Gene ID	5226
Gene Symbol	PGD
UniProt ID	6PGD_HUMAN
Immunogen Region	184-483
Immunogen Sequence	KMVHNGIEYGDMLICEAYH LMKDVLGMAQDEMAQAFEDW NKTELDLSFLIEITANILKFKQ DTDGKHLPLKIRDSAGQKGT GKWTAISALEYGVPTLIGE AVFARCLSSLKDERIQASKK LKGPKQKFQFDGDKSFLEDI RKALYASKIISYAQQFMLLR QAATEFGWTLNYGGIALMWR GGCIIRSVFLGKIKDAFDRN PELQNLLDDFFKSAVENCQ DSWRRRAVSTGVQAGIPMP
Specificity	Recombinant fusion protein containing a sequence corresponding to amino acids 184-483 of human PGD (NP_002622.2).

ADDITIONAL INFORMATION

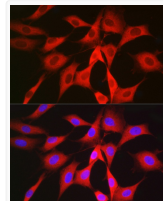
Note STRICTLY FOR FURTHER SCIENTIFIC RESEARCH USE ONLY (RUO). MUST NOT TO BE USED IN DIAGNOSTIC OR THERAPEUTIC APPLICATIONS.



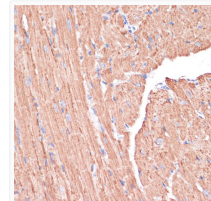
Immunofluorescence analysis of U2OS cells using PGD Rabbit polyclonal antibody (STJ110021) at dilution of 1:50 (40x lens). Blue: DAPI for nuclear staining.



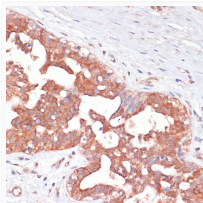
Immunofluorescence analysis of PC-12 cells using PGD Rabbit polyclonal antibody (STJ110021) at dilution of 1:50 (40x lens). Blue: DAPI for nuclear staining.



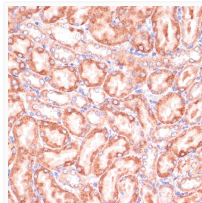
Immunofluorescence analysis of NIH/3T3 cells using PGD Rabbit polyclonal antibody (STJ110021) at dilution of 1:50 (40x lens). Blue: DAPI for nuclear staining.



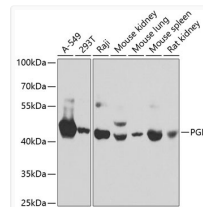
Immunohistochemistry analysis of paraffin-embedded Mouse heart using PGD antibody (STJ110021) at dilution of 1:100 (40x lens). Perform microwave antigen retrieval with 10 mM PBS buffer pH 7. 2 before commencing with immunohistochemistry staining protocol.



Immunohistochemistry analysis of paraffin-embedded Human mammary cancer using PGD antibody (STJ110021) at dilution of 1:100 (40x lens). Perform microwave antigen retrieval with 10 mM PBS buffer pH 7. 2 before commencing with immunohistochemistry staining protocol.



Immunohistochemistry analysis of paraffin-embedded Rat kidney using PGD antibody (STJ110021) at dilution of 1:100 (40x lens). Perform microwave antigen retrieval with 10 mM PBS buffer pH 7. 2 before commencing with immunohistochemistry staining protocol.



Western blot analysis of extracts of various cell lines, using PGD antibody (STJ110021) at 1:1000 dilution. Secondary antibody: HRP Goat Anti-Rabbit IgG (H+L) (STJS000856) at 1:10000 dilution. Lysates/proteins: 25 Mu g per lane. Blocking buffer: 3% nonfat dry milk in TBST.