

Human IL-21R (CD360) protein (Recombinant) (STJP000690)
STJP000690

GENERAL INFORMATION

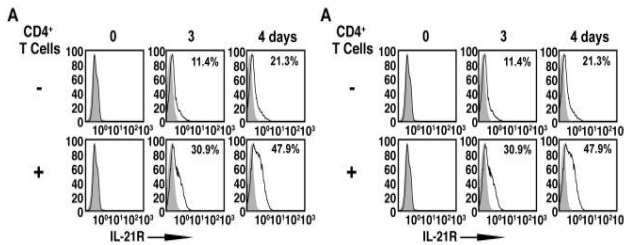
Product Type Proteins
Short Description Recombinant-Human IL-21R (CD360)-protein was developed from hek293. For use in research applications.
Host/Source HEK293

PRODUCT PROPERTIES

Concentration
Formulation Recombinant Interleukin-21receptor is supplied as lyophilized 0.2 Mu m filtered PBS solution, pH7.2.
Purification
Dilution Range >98%, as determined by SDS-PAGE and HPLC
Storage Recombinant IL-21R, as supplied, can be stored in working aliquots at 2-8°C for one month, or at -20°C to -70°C for twelve months.
Instruction Avoid repeated freeze/thaw cycles.

TARGET INFORMATION

Gene ID 50615
Gene Symbol IL21R
Uniprot ID IL21R_HUMAN
Immunogen
Sequence



On the left, histogram plots for 1 donor is shown and, on the right, IL-21R expression on day 4 is displayed for 5 donors.

MFBI Th1/Th2 Flow Cytomix Multiplex kits (eBioscience) were used to measure the concentration of cytokines in the serum two hours after s. c. treatment with soluble peptide, while IL-21 and IL-10 Flow Cytomix simplex kits (both eBioscience) were used to assay cell culture supernatant. Fluorescence intensity was measured on a FACS Calibur flow cytometer and data were analysed using FlowCytomix Pro software (eBioscience). Conventional sandwich ELISA were performed to quantify cytokine concentration in cell culture supernatant (harvested at 24 hours after re-stimulation for IL-2, at 72 hours for IFN-Gamma and IL-10) using matched antibody pairs (all IL-2 coating, JES6-TA12 (2 Mu g ml⁻¹), biotinylated, JES6-SH4 (0.5 Mu g ml⁻¹), IFN-Gamma: coating R4-SAC (2 Mu g ml⁻¹), biotinylated, XMGT-2 (0.5 Mu g ml⁻¹), IL-10: coating JES5-2A5 (2 Mu g ml⁻¹), biotinylated, SNC-1 (0.5 Mu g ml⁻¹). Optical change was measured with a SpectraMax 190 microplate reader; cytokine concentration was calculated using Microplate Manager software. Intracellular cytokine staining of splenocytes was performed after a 3 hour stimulation with...

This product is suitable for in-vitro studies under the RESEARCH USE ONLY [RUO] licence. This product must not be used as for diagnostic or other medical purposes.
 St John's Laboratory Ltd, Knowledge Dock Business Centre, University Way, London, E16 2RD | Tel: 0208 223 3081