

Rat PLTP (Phospholipid Transfer Protein) Sandwich ELISA Kit (STJE0011569)

STJE0011569

GENERAL INFORMATION

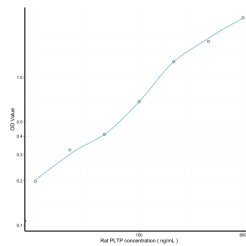
| | |
|--------------------------|------------------------------------------------------------------------------------------------------------------------------------------------------------------------------------------|
| Product Type | Kits |
| Short Description | This PLTP Sandwich ELISA Kit is an in-vitro enzyme-linked immunosorbent assay for the measurement of samples in rat cell culture supernatant, serum and plasma (EDTA, citrate, heparin). |
| Applications | ELISA |
| Reactivity | Rat |

PRODUCT PROPERTIES

| | |
|------------------------|------------------------------------------------------------------------------------------------------------------------------------------------------------------|
| Detection | 12.5-800ng/mL |
| Sensitivity | 5.5ng/mL |
| Detection Limit | 12.5-800ng/mL |
| Assay Time | 4.5 hrs |
| Storage | Store the unopened kit in the fridge at 2-8°C for up to 6 months. Once opened store individual kit contents according to components table provided with the kit. |
| Instruction | |
| Note | FOR RESEARCH USE ONLY (RUO). |

TARGET INFORMATION

| | |
|---------------------|---------------------------------------------------------------|
| Sample Types | serum, plasma, tissue homogenates or other biological fluids. |
| Gene | |
| Symbol | |
| Uniprot ID | |



This product is suitable for in-vitro studies under the RESEARCH USE ONLY [RUO] licence. This product must not be used as for diagnostic or other medical purposes.
 St John's Laboratory Ltd, Knowledge Dock Business Centre, University Way, London, E16 2RD | Tel: 0208 223 3081