

## Human NPTN (Neuroplastin) Sandwich ELISA Kit (STJE0011046)

STJE0011046

### GENERAL INFORMATION

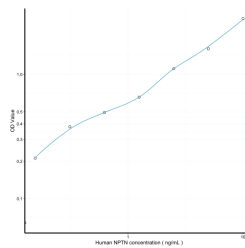
|                          |  |
|--------------------------|--|
| <b>Product Type</b>      | Kits   |
| <b>Short Description</b> | This NPTN Sandwich ELISA Kit is an in-vitro enzyme-linked immunosorbent assay for the measurement of samples in human cell culture supernatant, serum and plasma (EDTA, citrate, heparin). |
| <b>Applications</b>      | ELISA  |
| <b>Reactivity</b>        | Human  |

### PRODUCT PROPERTIES

|                        |  |
|------------------------|--|
| <b>Detection</b>       | 0.156-10ng/mL  |
| <b>Sensitivity</b>     | 0.052ng/mL   |
| <b>Detection Limit</b> | 0.156-10ng/mL  |
| <b>Assay Time</b>      | 4.5 hrs  |
| <b>Storage</b>         | Store the unopened kit in the fridge at 2-8°C for up to 6 months. Once opened store individual kit contents according to components table provided with the kit. |
| <b>Instruction</b>     |  |
| <b>Note</b>            | FOR RESEARCH USE ONLY (RUO).   |

### TARGET INFORMATION

|                     |  |
|---------------------|--|
| <b>Sample Types</b> | tissue homogenates or other biological fluids. |
| <b>Gene</b>         | <a href="#">NPTN</a>                           |
| <b>Symbol</b>       |  |
| <b>Uniprot ID</b>   | <a href="#">NPTN_HUMAN</a>                     |



This product is suitable for in-vitro studies under the RESEARCH USE ONLY [RUO] licence. This product must not be used as for diagnostic or other medical purposes.  
 St John's Laboratory Ltd, Knowledge Dock Business Centre, University Way, London, E16 2RD | Tel: 0208 223 3081