

Rat MYH7 (Myosin Heavy Chain 7, Cardiac Muscle, Beta) Sandwich ELISA Kit (STJE0010829)

STJE0010829

GENERAL INFORMATION

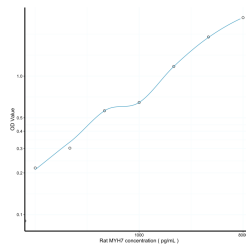
Product Type	Kits
Short Description	This MYH7 Sandwich ELISA Kit is an in-vitro enzyme-linked immunosorbent assay for the measurement of samples in rat cell culture supernatant, serum and plasma (EDTA, citrate, heparin).
Applications	ELISA
Reactivity	Rat

PRODUCT PROPERTIES

Detection	125-8000pg/mL
Sensitivity	43pg/mL
Detection Limit	125-8000pg/mL
Assay Time	4,5 hrs
Storage	Store the unopened kit in the fridge at 2-8°C for up to 6 months. Once opened store individual kit contents according to components table provided with the kit.
Instruction	
Note	FOR RESEARCH USE ONLY (RUO).

TARGET INFORMATION

Sample Types	serum, plasma, tissue homogenates or other biological fluids.
Gene	Myh7
Symbol	
Uniprot ID	MYH7_RAT



This product is suitable for in-vitro studies under the RESEARCH USE ONLY [RUO] licence. This product must not be used as for diagnostic or other medical purposes.
St John's Laboratory Ltd, Knowledge Dock Business Centre, University Way, London, E16 2RD | Tel: 0208 223 3081