

Mouse GP1Bb (Glycoprotein Ib Beta Polypeptide, Platelet) Sandwich ELISA Kit (STJE0009240)

STJE0009240

GENERAL INFORMATION

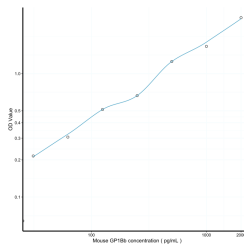
Product Type	Kits
Short Description	This GP1Bb Sandwich ELISA Kit is an in-vitro enzyme-linked immunosorbent assay for the measurement of samples in mouse cell culture supernatant, serum and plasma (EDTA, citrate, heparin).
Applications	ELISA
Reactivity	Mouse

PRODUCT PROPERTIES

Detection	31.2-2000pg/mL
Sensitivity	14.7pg/mL
Detection Limit	31.2-2000pg/mL
Assay Time	4.5 hrs
Storage	Store the unopened kit in the fridge at 2-8°C for up to 6 months. Once opened store individual kit contents according to components table provided with the kit.
Note	FOR RESEARCH USE ONLY (RUO).

TARGET INFORMATION

Sample Types	plasma.
Gene	Gp1bb
Symbol	
Uniprot ID	GP1BB_MOUSE



This product is suitable for in-vitro studies under the RESEARCH USE ONLY [RUO] licence. This product must not be used as for diagnostic or other medical purposes.
St John's Laboratory Ltd, Knowledge Dock Business Centre, University Way, London, E16 2RD | Tel: 0208 223 3081