

## Rat EDN2 (Endothelin 2) Competitive ELISA Kit (STJE0008578)

STJE0008578

### GENERAL INFORMATION

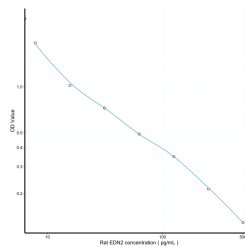
|                          |   |
|--------------------------|---|
| <b>Product Type</b>      | Kits  |
| <b>Short Description</b> | This EDN2 Competitive ELISA Kit is an in-vitro enzyme-linked immunosorbent assay for the measurement of samples in rat cell culture supernatant, serum and plasma (EDTA, citrate, heparin). |
| <b>Applications</b>      | ELISA   |
| <b>Reactivity</b>        | Rat   |

### PRODUCT PROPERTIES

|                        |  |
|------------------------|--|
| <b>Detection</b>       | 7.81-500pg/mL  |
| <b>Sensitivity</b>     | 2.96pg/mL  |
| <b>Detection Limit</b> | 7.81-500pg/mL  |
| <b>Assay Time</b>      | 2.5 hrs  |
| <b>Storage</b>         | Store the unopened kit in the fridge at 2-8°C for up to 6 months. Once opened store individual kit contents according to components table provided with the kit. |
| <b>Instruction</b>     |  |
| <b>Note</b>            | FOR RESEARCH USE ONLY (RUO).   |

### TARGET INFORMATION

|                     |  |
|---------------------|--|
| <b>Sample Types</b> | serum, plasma, tissue homogenates, cell lysates, cell culture supernates or other biological fluids. |
| <b>Gene</b>         | <a href="#">Edn2</a>   |
| <b>Symbol</b>       |  |
| <b>Uniprot ID</b>   | <a href="#">EDN2_RAT</a>   |



This product is suitable for in-vitro studies under the RESEARCH USE ONLY [RUO] licence. This product must not be used as for diagnostic or other medical purposes.  
St John's Laboratory Ltd, Knowledge Dock Business Centre, University Way, London, E16 2RD | Tel: 0208 223 3081