

Mouse CSTA (Cystatin A) Sandwich ELISA Kit (STJE0008201)

STJE0008201

GENERAL INFORMATION

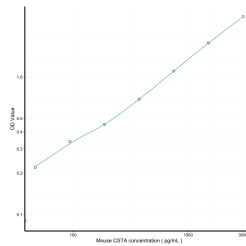
Product Type	Kits
Short Description	This CSTA Sandwich ELISA Kit is an in-vitro enzyme-linked immunosorbent assay for the measurement of samples in mouse cell culture supernatant, serum and plasma (EDTA, citrate, heparin).
Applications	ELISA
Reactivity	Mouse

PRODUCT PROPERTIES

Detection	46.8-3000pg/mL
Sensitivity	14.25pg/mL
Detection Limit	46.8-3000pg/mL
Assay Time	4.5 hrs
Storage	Store the unopened kit in the fridge at 2-8°C for up to 6 months. Once opened store individual kit contents according to components table provided with the kit.
Instruction	
Note	FOR RESEARCH USE ONLY (RUO).

TARGET INFORMATION

Sample Types	serum, plasma, saliva, tissue homogenates, cell lysates, cell culture supernates or other biological fluids.
Gene	Csta
Symbol	
Uniprot ID	CYTA_MOUSE



This product is suitable for in-vitro studies under the RESEARCH USE ONLY [RUO] licence. This product must not be used as for diagnostic or other medical purposes.
St John's Laboratory Ltd, Knowledge Dock Business Centre, University Way, London, E16 2RD | Tel: 0208 223 3081