

Mouse ATP1b4 (ATPase, Na⁺/K⁺ Transporting Beta 4 Polypeptide) Sandwich ELISA Kit (STJE0007382)

STJE0007382

GENERAL INFORMATION

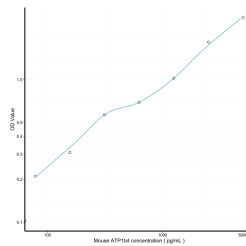
Product Type	Kits
Short Description	This ATP1b4 Sandwich ELISA Kit is an in-vitro enzyme-linked immunosorbent assay for the measurement of samples in mouse cell culture supernatant, serum and plasma (EDTA, citrate, heparin).
Applications	ELISA
Reactivity	Mouse

PRODUCT PROPERTIES

Detection	78.1-5000pg/mL
Sensitivity	27.8pg/mL
Detection Limit	78.1-5000pg/mL
Assay Time	4.5 hrs
Storage Instruction	Store the unopened kit in the fridge at 2-8°C for up to 6 months. Once opened store individual kit contents according to components table provided with the kit.
Note	FOR RESEARCH USE ONLY (RUO).

TARGET INFORMATION

Sample Types	tissue homogenates or other biological fluids.
Gene	Atp1b4
Symbol	
Uniprot ID	AT1B4_MOUSE



This product is suitable for in-vitro studies under the RESEARCH USE ONLY [RUO] licence. This product must not be used as for diagnostic or other medical purposes.
St John's Laboratory Ltd, Knowledge Dock Business Centre, University Way, London, E16 2RD | Tel: 0208 223 3081