

Rat APAF1 (Apoptotic Peptidase Activating Factor 1) Sandwich ELISA Kit (STJE0007204)

STJE0007204

GENERAL INFORMATION

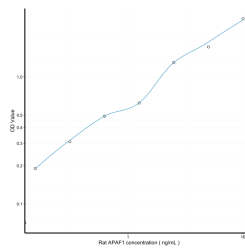
| | |
|--------------------------|-------------------------------------------------------------------------------------------------------------------------------------------------------------------------------------------|
| Product Type | Kits |
| Short Description | This APAF1 Sandwich ELISA Kit is an in-vitro enzyme-linked immunosorbent assay for the measurement of samples in rat cell culture supernatant, serum and plasma (EDTA, citrate, heparin). |
| Applications | ELISA |
| Reactivity | Rat |

PRODUCT PROPERTIES

| | |
|------------------------|------------------------------------------------------------------------------------------------------------------------------------------------------------------|
| Detection | 0.156-10ng/mL |
| Sensitivity | 0.062ng/mL |
| Detection Limit | 0.156-10ng/mL |
| Assay Time | 4.5 hrs |
| Storage | Store the unopened kit in the fridge at 2-8°C for up to 6 months. Once opened store individual kit contents according to components table provided with the kit. |
| Instruction | |
| Note | FOR RESEARCH USE ONLY (RUO). |

TARGET INFORMATION

| | |
|---------------------|--------------------------------------------------------------|
| Sample Types | tissue homogenates, cell lysates or other biological fluids. |
| Gene | Apaf1 |
| Symbol | |
| Uniprot ID | APAF_RAT |



This product is suitable for in-vitro studies under the RESEARCH USE ONLY [RUO] licence. This product must not be used as for diagnostic or other medical purposes.
St John's Laboratory Ltd, Knowledge Dock Business Centre, University Way, London, E16 2RD | Tel: 0208 223 3081