

Mouse ALDH9A1 (Aldehyde Dehydrogenase 9 Family, Member A1) Sandwich ELISA Kit (STJE0007056)

STJE0007056

GENERAL INFORMATION

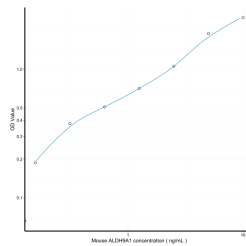
| | |
|--------------------------|---|
| Product Type | Kits |
| Short Description | This ALDH9A1 Sandwich ELISA Kit is an in-vitro enzyme-linked immunosorbent assay for the measurement of samples in mouse cell culture supernatant, serum and plasma (EDTA, citrate, heparin). |
| Applications | ELISA |
| Reactivity | Mouse |

PRODUCT PROPERTIES

| | |
|----------------------------|--|
| Detection | 0.156-10ng/mL |
| Sensitivity | 0.066ng/mL |
| Detection Limit | 0.156-10ng/mL |
| Assay Time | 4.5 hrs |
| Storage Instruction | Store the unopened kit in the fridge at 2-8°C for up to 6 months. Once opened store individual kit contents according to components table provided with the kit. |
| Note | FOR RESEARCH USE ONLY (RUO). |

TARGET INFORMATION

| | |
|---------------------|---|
| Sample Types | serum, plasma, tissue homogenates or other biological fluids. |
| Gene | Aldh9a1 |
| Symbol | |
| Uniprot ID | AL9A1_MOUSE |



This product is suitable for in-vitro studies under the RESEARCH USE ONLY [RUO] licence. This product must not be used as for diagnostic or other medical purposes.
St John's Laboratory Ltd, Knowledge Dock Business Centre, University Way, London, E16 2RD | Tel: 0208 223 3081