

## Mouse a2PI (Alpha-2-Plasmin Inhibitor) Sandwich ELISA Kit (STJE0006800)

STJE0006800

### GENERAL INFORMATION

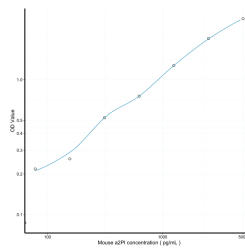
|                          |                                                                                                                                                                                            |
|--------------------------|--------------------------------------------------------------------------------------------------------------------------------------------------------------------------------------------|
| <b>Product Type</b>      | Kits                                                                                                                                                                                       |
| <b>Short Description</b> | This a2PI Sandwich ELISA Kit is an in-vitro enzyme-linked immunosorbent assay for the measurement of samples in mouse cell culture supernatant, serum and plasma (EDTA, citrate, heparin). |
| <b>Applications</b>      | ELISA                                                                                                                                                                                      |
| <b>Reactivity</b>        | Mouse                                                                                                                                                                                      |

### PRODUCT PROPERTIES

|                        |                                                                                                                                                                  |
|------------------------|------------------------------------------------------------------------------------------------------------------------------------------------------------------|
| <b>Detection</b>       | 78.1-5000pg/mL                                                                                                                                                   |
| <b>Sensitivity</b>     | 27pg/mL                                                                                                                                                          |
| <b>Detection Limit</b> | 78.1-5000pg/mL                                                                                                                                                   |
| <b>Assay Time</b>      | 4.5 hrs                                                                                                                                                          |
| <b>Storage</b>         | Store the unopened kit in the fridge at 2-8°C for up to 6 months. Once opened store individual kit contents according to components table provided with the kit. |
| <b>Instruction</b>     |                                                                                                                                                                  |
| <b>Note</b>            | FOR RESEARCH USE ONLY (RUO).                                                                                                                                     |

### TARGET INFORMATION

|                     |                                                               |
|---------------------|---------------------------------------------------------------|
| <b>Sample Types</b> | serum, plasma, tissue homogenates or other biological fluids. |
| <b>Gene</b>         | <a href="#">Serpinf2</a>                                      |
| <b>Symbol</b>       |                                                               |
| <b>Uniprot ID</b>   | <a href="#">A2AP_MOUSE</a>                                    |



This product is suitable for in-vitro studies under the RESEARCH USE ONLY [RUO] licence. This product must not be used as for diagnostic or other medical purposes.  
St John's Laboratory Ltd, Knowledge Dock Business Centre, University Way, London, E16 2RD | Tel: 0208 223 3081