

## Rat Lgals9 (Galectin-9) Sandwich ELISA Kit (STJE0005734)

STJE0005734

### GENERAL INFORMATION

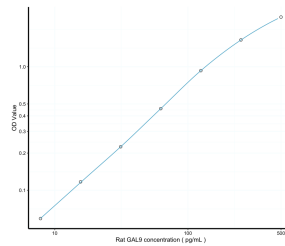
|                          |  |
|--------------------------|--|
| <b>Product Type</b>      | Kits   |
| <b>Short Description</b> | This Lgals9 Sandwich ELISA Kit is an in-vitro enzyme-linked immunosorbent assay for the measurement of samples in rat cell culture supernatant, serum and plasma (EDTA, citrate, heparin). |
| <b>Applications</b>      | ELISA  |
| <b>Reactivity</b>        | Rat  |

### PRODUCT PROPERTIES

|                        |   |
|------------------------|---|
| <b>Detection</b>       | Colormetric   |
| <b>Sensitivity</b>     | 4.69pg/mL   |
| <b>Detection Limit</b> | 7.81~500pg/mL   |
| <b>Assay Time</b>      | 3.5h  |
| <b>Storage</b>         | If unopened the kit may be stored at 2-8 °C for up to 1 month. If the kit will not be used within 1 month, store the components separately, according to the component table in the manual. |
| <b>Instruction</b>     |   |
| <b>Note</b>            | FOR RESEARCH USE ONLY (RUO).  |

### TARGET INFORMATION

|                     |   |
|---------------------|---|
| <b>Sample Types</b> | Serum, plasma and other biological fluids |
| <b>Gene</b>         | Lgals9                                    |
| <b>Symbol</b>       |   |
| <b>Uniprot ID</b>   | LEG9_RAT                                  |



This product is suitable for in-vitro studies under the RESEARCH USE ONLY [RUO] licence. This product must not be used as for diagnostic or other medical purposes.  
St John's Laboratory Ltd, Knowledge Dock Business Centre, University Way, London, E16 2RD | Tel: 0208 223 3081