

## Mouse Mapt (Microtubule-associated protein tau) Sandwich ELISA Kit (STJE0005134)

STJE0005134

### GENERAL INFORMATION

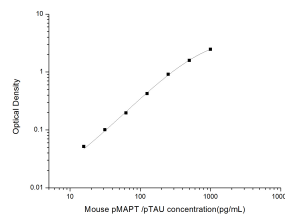
<b>Product Type</b>	Kits
<b>Short Description</b>	This Mapt Sandwich ELISA Kit is an in-vitro enzyme-linked immunosorbent assay for the measurement of samples in mouse cell culture supernatant, serum and plasma (EDTA, citrate, heparin).
<b>Applications</b>	ELISA
<b>Reactivity</b>	Mouse

### PRODUCT PROPERTIES

<b>Detection</b>	Colometric
<b>Sensitivity</b>	9.38pg/mL
<b>Detection Limit</b>	15.63~1000pg/mL
<b>Assay Time</b>	3.5h
<b>Storage</b>	If unopened the kit may be stored at 2-8 °C for up to 1 month. If the kit will not be used within 1 month, store the components separately, according to the component table in the manual.
<b>Instruction</b>	
<b>Note</b>	FOR RESEARCH USE ONLY (RUO).

### TARGET INFORMATION

<b>Sample Types</b>	Serum, plasma and other biological fluids
<b>Gene</b>	<a href="#">Mapt</a>
<b>Symbol</b>	
<b>Uniprot ID</b>	<a href="#">TAU_MOUSE</a>



This product is suitable for in-vitro studies under the RESEARCH USE ONLY [RUO] licence. This product must not be used as for diagnostic or other medical purposes.  
St John's Laboratory Ltd, Knowledge Dock Business Centre, University Way, London, E16 2RD | Tel: 0208 223 3081