

Mouse Shbg (Sex hormone-binding globulin) Sandwich ELISA Kit (STJE0004964)

STJE0004964

GENERAL INFORMATION

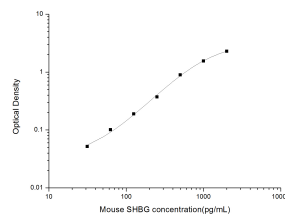
Product Type	Kits
Short Description	This Shbg Sandwich ELISA Kit is an in-vitro enzyme-linked immunosorbent assay for the measurement of samples in mouse cell culture supernatant, serum and plasma (EDTA, citrate, heparin).
Applications	ELISA
Reactivity	Mouse

PRODUCT PROPERTIES

Detection	Colometric
Sensitivity	18.75pg/mL
Detection Limit	31.25~2000pg/mL
Assay Time	3.5h
Storage	If unopened the kit may be stored at 2-8 °C for up to 1 month. If the kit will not be used within 1 month, store the components separately, according to the component table in the manual.
Instruction	
Note	FOR RESEARCH USE ONLY (RUO).

TARGET INFORMATION

Sample Types	Serum, plasma and other biological fluids
Gene	Shbg
Symbol	
Uniprot ID	SHBG_MOUSE



This product is suitable for in-vitro studies under the RESEARCH USE ONLY [RUO] licence. This product must not be used as for diagnostic or other medical purposes.
St John's Laboratory Ltd, Knowledge Dock Business Centre, University Way, London, E16 2RD | Tel: 0208 223 3081