

Human RLN1 (Prorelaxin H1) Sandwich ELISA Kit (STJE0003132)

STJE0003132

GENERAL INFORMATION

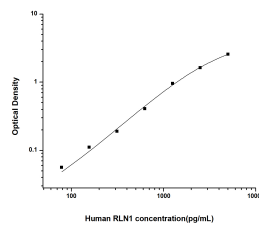
Product Type	Kits
Short Description	This RLN1 Sandwich ELISA Kit is an in-vitro enzyme-linked immunosorbent assay for the measurement of samples in human cell culture supernatant, serum and plasma (EDTA, citrate, heparin).
Applications	ELISA
Reactivity	Human

PRODUCT PROPERTIES

Detection	Colometric
Sensitivity	46.88pg/mL
Detection Limit	78.13~5000pg/mL
Assay Time	3.5h
Storage	If unopened the kit may be stored at 2-8 °C for up to 1 month. If the kit will not be used within 1 month, store the components separately, according to the component table in the manual.
Instruction	
Note	FOR RESEARCH USE ONLY (RUO).

TARGET INFORMATION

Sample Types	Serum, plasma and other biological fluids
Gene	RLN1
Symbol	
Uniprot ID	REL1_HUMAN



This product is suitable for in-vitro studies under the RESEARCH USE ONLY [RUO] licence. This product must not be used as for diagnostic or other medical purposes.
St John's Laboratory Ltd, Knowledge Dock Business Centre, University Way, London, E16 2RD | Tel: 0208 223 3081