

Human SMAD7 (Mothers against decapentaplegic homolog 7) Sandwich ELISA Kit (STJE0002601)

STJE0002601

GENERAL INFORMATION

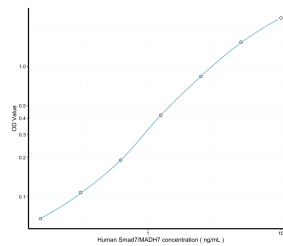
Product Type	Kits
Short Description	This SMAD7 Sandwich ELISA Kit is an in-vitro enzyme-linked immunosorbent assay for the measurement of samples in human cell culture supernatant, serum and plasma (EDTA, citrate, heparin).
Applications	ELISA
Reactivity	Human

PRODUCT PROPERTIES

Detection	Colormetric
Sensitivity	0.09ng/mL
Detection Limit	0.16-10ng/mL
Assay Time	3.5h
Storage Instruction	If unopened the kit may be stored at 2-8 °C for up to 1 month. If the kit will not be used within 1 month, store the components separately, according to the component table in the manual.
Note	FOR RESEARCH USE ONLY (RUO).

TARGET INFORMATION

Sample Types	Serum, plasma and other biological fluids
Gene	SMAD7
Symbol	
Uniprot ID	SMAD7_HUMAN



This product is suitable for in-vitro studies under the RESEARCH USE ONLY [RUO] licence. This product must not be used as for diagnostic or other medical purposes.
St John's Laboratory Ltd, Knowledge Dock Business Centre, University Way, London, E16 2RD | Tel: 0208 223 3081