

Human RPS6KB1 (Ribosomal protein S6 kinase beta-1) CLIA Kit (STJC0000555)

STJC0000555

GENERAL INFORMATION

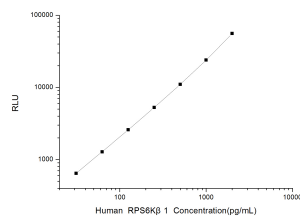
Product Type	Kits
Short Description	This human RPS6KB1 kit is a highly sensitive in-vitro chemiluminescent immunoassay for the measurement of trace amounts of analytes.
Applications	CLIA
Reactivity	Human

PRODUCT PROPERTIES

Detection	Chemiluminescence
Sensitivity	18.75pg/mL
Detection Limit	31.25~2000pg/mL
Assay Time	3.5h
Storage	If unopened the kit may be stored at 2-8 °C for up to 1 month. If the kit will not be used within 1 month, store the components separately, according to the component table in the manual.
Instruction	
Note	FOR RESEARCH USE ONLY (RUO).

TARGET INFORMATION

Sample Types	Serum, plasma and other biological fluids
Gene Symbol	RPS6KB1
Uniprot ID	KS6B1_HUMAN



This product is suitable for in-vitro studies under the RESEARCH USE ONLY [RUO] licence. This product must not be used as for diagnostic or other medical purposes.
St John's Laboratory Ltd, Knowledge Dock Business Centre, University Way, London, E16 2RD | Tel: 0208 223 3081