

## Anti-RET antibody (STJA0002880)

STJA0002880

### GENERAL INFORMATION

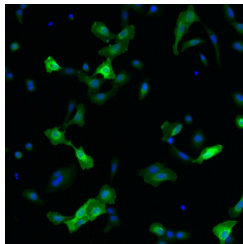
<b>Product Type</b>	Primary antibodies
<b>Short Description</b>	Chicken polyclonal antibody anti-RET is suitable for use in ELISA, Western Blot and Immunofluorescence research applications.
<b>Applications</b>	ELISA, WB, IF
<b>Host/Source</b>	Chicken
<b>Reactivity</b>	Human

### PRODUCT PROPERTIES

<b>Clonality</b>	Polyclonal
<b>Clone ID</b>	
<b>Concentration</b>	
<b>Conjugation</b>	Unconjugated
<b>Purification</b>	RET affinity purified
<b>Dilution Range</b>	WB 0.1 to 0.2 µg/ml; ELISA 8 to 12, 5 ng/ml, IF 2 to 4 µg/ml Polyclonal antibody working titer has to be established practically for each particular antigen and assay format
<b>Formulation</b>	Concentrated ammonium sulphate in PBS pH 7.4
<b>Isotype</b>	IgY
<b>Storage Instruction</b>	Store at +4°C upon receipt. As product is (NH <sub>4</sub> ) <sub>2</sub> SO <sub>4</sub> precipitate, mix well by pipetting or vortexing prior use

### TARGET INFORMATION

<b>Gene ID</b>	5979
<b>Gene Symbol</b>	RET
<b>Uniprot ID</b>	RET_HUMAN
<b>Immunogen</b>	Recombinant His-tagged extracellular fragment of human RET protein produced using CHO-based proprietary suspension cell line. The extracellular fragment of hRET was expressed and secreted to the cell culture supernatant. Protein was purified by Ni-af
<b>Immunogen Region</b>	
<b>Specificity</b>	Human RET
<b>Immunogen Sequence</b>	



---

This product is suitable for in-vitro studies under the RESEARCH USE ONLY [RUO] licence. This product must not be used as for diagnostic or other medical purposes.  
St John's Laboratory Ltd, Knowledge Dock Business Centre, University Way, London, E16 2RD | Tel: 0208 223 3081