

## Anti-Part-Humanised-HCV subtype 1b NS5B protein antibody (111-130aa) [9A2] (STJA0002829)

STJA0002829

### GENERAL INFORMATION

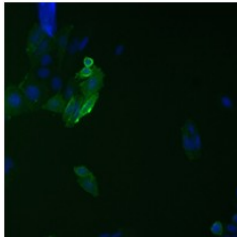
<b>Product Type</b>	Primary antibodies
<b>Short Description</b>	Mouse monoclonal antibody anti-Part-Humanised-HCV subtype 1b NS5B protein (111-130aa) is suitable for use in ELISA, Western Blot and Immunofluorescence research applications.
<b>Applications</b>	ELISA, WB, IF
<b>Host/Source</b>	Mouse
<b>Reactivity</b>	Human, HCV

### PRODUCT PROPERTIES

<b>Clonality</b>	Monoclonal
<b>Clone ID</b>	9A2
<b>Concentration</b>	
<b>Conjugation</b>	Unconjugated
<b>Purification</b>	Protein G purification
<b>Dilution Range</b>	ELISA titer 11000; Western immunoblotting, reduced conditions; dilution 11000; Immunofluorescence 11000 Monoclonal antibody working titer has to be established practically for each particular antigen and assay format.
<b>Formulation</b>	PBS pH 7.4, with 0.1% sodium azide
<b>Isotype</b>	IgG1
<b>Storage Instruction</b>	Store at -20 to -70 °C upon receipt. Divide antibody into aliquots prior usage. Avoid multiple freeze-thaw cycles as product degradation may result.

### TARGET INFORMATION

<b>Gene ID</b>	
<b>Gene Symbol</b>	
<b>Uniprot ID</b>	
<b>Immunogen</b>	Recombinant Hepatitis C Virus subtype 1b nonstructural protein 5B (NS5B) RNA-dependent RNA polymerase (RdRp). Mapped to amino acids 111-130 (LSSKAVNHIRSVWKDLEDT)
<b>Immunogen Region</b>	111-130aa
<b>Specificity</b>	Human, HCV subtype 1b NS5B, Epitope mapped to amino acids 111-130 (LSSKAVNHIRSVWKDLEDT)
<b>Immunogen Sequence</b>	



---

This product is suitable for in-vitro studies under the RESEARCH USE ONLY [RUO] licence. This product must not be used as for diagnostic or other medical purposes.  
St John's Laboratory Ltd, Knowledge Dock Business Centre, University Way, London, E16 2RD | Tel: 0208 223 3081