

## Anti-CDNF antibody (STJA0002819)

STJA0002819

### GENERAL INFORMATION

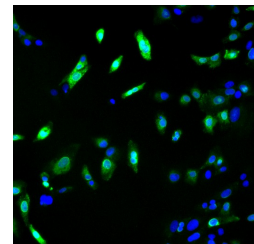
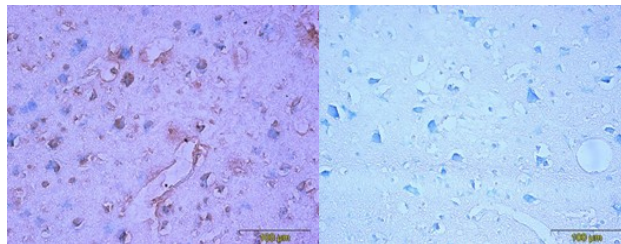
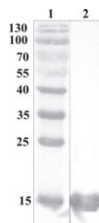
<b>Product Type</b>	Primary antibodies
<b>Short Description</b>	Rabbit polyclonal antibody anti-CDNF is suitable for use in ELISA, Western Blot, Immunofluorescence and Immunohistochemistry research applications.
<b>Applications</b>	ELISA, WB, IF, IHC-P
<b>Host/Source</b>	Rabbit
<b>Reactivity</b>	Human, Mouse

### PRODUCT PROPERTIES

<b>Clonality</b>	Polyclonal
<b>Clone ID</b>	
<b>Concentration</b>	
<b>Conjugation</b>	Unconjugated
<b>Purification</b>	CDNF-affinity purification
<b>Dilution Range</b>	ELISA 0.1 to 0.2 µg/ml; WB 0.1 to 0.2 µg/ml; IF 0.3 to 2 µg/ml IHC-P (on formalin-fixed, paraffin-embedded tissues, antigen retrieval)-5 to 10 µg/ml; Monoclonal antibody working dilution has to be established practically for each particular antigen and
<b>Formulation</b>	50% saturated ammonium sulphate in PBS pH 7.4
<b>Isotype</b>	IgG
<b>Storage Instruction</b>	Store at +4°C upon receipt. As product is (NH <sub>4</sub> ) <sub>2</sub> SO <sub>4</sub> precipitate, mix well by pipetting or vortexing prior use

### TARGET INFORMATION

<b>Gene ID</b>	441549
<b>Gene Symbol</b>	CDNF
<b>Uniprot ID</b>	CDNF_HUMAN
<b>Immunogen</b>	Recombinant human CDNF protein produced using CHO-based proprietary suspension cell line. Purified from cell culture supernatant. . Human CDNF
<b>Immunogen Region</b>	
<b>Specificity</b>	Human, mouse; others not tested
<b>Immunogen Sequence</b>	



This product is suitable for in-vitro studies under the RESEARCH USE ONLY [RUO] licence. This product must not be used as for diagnostic or other medical purposes.  
St John's Laboratory Ltd, Knowledge Dock Business Centre, University Way, London, E16 2RD | Tel: 0208 223 3081