

Anti-Papillomavirus type 1 E2-protein antibody (250-280aa) [1E4] (STJA0002811)

STJA0002811

GENERAL INFORMATION

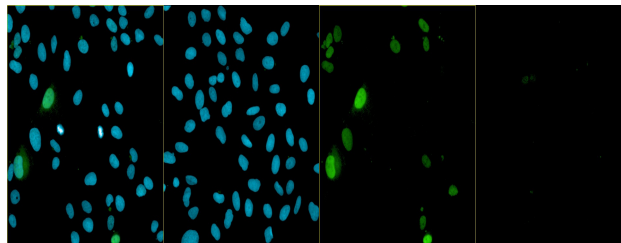
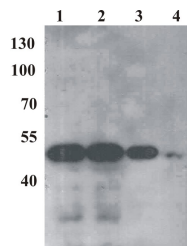
Product Type	Primary antibodies
Short Description	Mouse monoclonal antibody anti-Papillomavirus type 1 E2-protein (250-280aa) is suitable for use in ELISA, Western Blot and Immunofluorescence research applications.
Applications	ELISA, WB, IF
Host/Source	Mouse
Reactivity	PV

PRODUCT PROPERTIES

Clonality	Monoclonal
Clone ID	1E4
Concentration	
Conjugation	Unconjugated
Purification	Protein A purification
Dilution Range	ELISA 1 µg/ml; WB 0.33 to 1 µg/ml; IF 1 to 20 µg/ml Monoclonal antibody working titer has to be established practically for each particular antigen and assay format.
Formulation	PBS with 50% glycerol
Isotype	IgG
Storage Instruction	Store at -20 °C to -70 °C upon receipt. Divide antibody into aliquots prior usage. Avoid multiple freeze-thaw cycles as product degradation may result.

TARGET INFORMATION

Gene ID	
Gene Symbol	
Uniprot ID	
Immunogen	250-280aa
Immunogen Region	250-280aa
Specificity	
Immunogen Sequence	



This product is suitable for in-vitro studies under the RESEARCH USE ONLY [RUO] licence. This product must not be used as for diagnostic or other medical purposes.
St John's Laboratory Ltd, Knowledge Dock Business Centre, University Way, London, E16 2RD | Tel: 0208 223 3081