

## Anti-laminin Alpha 4 antibody [3H2] (STJA0002806)

STJA0002806

### GENERAL INFORMATION

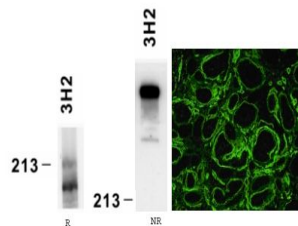
<b>Product Type</b>	Primary antibodies
<b>Short Description</b>	Mouse monoclonal antibody anti-Laminin Alpha 4 is suitable for use in ELISA, Immunohistochemistry, Western Blot and Immunoprecipitation research applications.
<b>Applications</b>	ELISA, IHC, WB, IP
<b>Host/Source</b>	Mouse
<b>Reactivity</b>	Human

### PRODUCT PROPERTIES

<b>Clonality</b>	Monoclonal
<b>Clone ID</b>	3H2
<b>Concentration</b>	
<b>Conjugation</b>	Unconjugated
<b>Purification</b>	Protein G purification
<b>Dilution Range</b>	ELISA titer 0.02 µg/ml; WB, reduced conditions; 0.5 to 1 µg/ml; IP 0.5 mg/ml; IHC dilution 5 to 10 µg/ml Monoclonal antibody working titer has to be established practically for each particular antigen and assay format
<b>Formulation</b>	PBS pH 7.4, with 0.1% sodium azide
<b>Isotype</b>	IgG1
<b>Storage Instruction</b>	Store at -20 to -70 °C upon receipt. Divide antibody into aliquots prior usage. Avoid multiple freeze-thaw cycles

### TARGET INFORMATION

<b>Gene ID</b>	<a href="#">3910</a>
<b>Gene Symbol</b>	<a href="#">LAMA4</a>
<b>Uniprot ID</b>	<a href="#">LAMA4_HUMAN</a>
<b>Immunogen</b>	Immunoaffinity-purified Laminin 411 (laminin-8 (Alpha 4 Beta 1 Gamma 1) from platelets. Human laminin a4
<b>Immunogen Region</b>	
<b>Specificity</b>	Human laminin Alpha 4
<b>Immunogen Sequence</b>	



This product is suitable for in-vitro studies under the RESEARCH USE ONLY [RUO] licence. This product must not be used as for diagnostic or other medical purposes.  
 St John's Laboratory Ltd, Knowledge Dock Business Centre, University Way, London, E16 2RD | Tel: 0208 223 3081