

Anti-CD21/CR2 antibody [BU32] {PE/Cyanine7} (STJA0001432)
STJA0001432

GENERAL INFORMATION

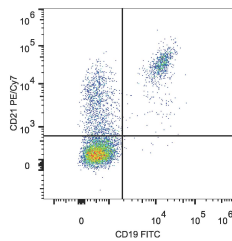
| | |
|--------------------------|--|
| Product Type | Primary antibodies |
| Short Description | Mouse monoclonal antibody anti-Complement receptor type 2 is suitable for use in Flow Cytometry research applications. |
| Applications | FC |
| Host/Source | Mouse |
| Reactivity | Human |

PRODUCT PROPERTIES

| | |
|----------------------------|--|
| Clonality | Monoclonal |
| Clone ID | BU32 |
| Concentration | |
| Conjugation | PE/Cyanine7 |
| Purification | |
| Dilution Range | |
| Formulation | PBS with 0.05% Proclin300, 1% BSA |
| Isotype | IgG1k |
| Storage Instruction | Recommend storing between 2-8°C and protecting from prolonged exposure to light. Do not freeze this product. |

TARGET INFORMATION

| | |
|---------------------------|-----------|
| Gene ID | 1380 |
| Gene Symbol | CR2 |
| Uniprot ID | CR2_HUMAN |
| Immunogen | |
| Immunogen Region | |
| Specificity | |
| Immunogen Sequence | |



This product is suitable for in-vitro studies under the RESEARCH USE ONLY [RUO] licence. This product must not be used as for diagnostic or other medical purposes.
St John's Laboratory Ltd, Knowledge Dock Business Centre, University Way, London, E16 2RD | Tel: 0208 223 3081