

Anti-Ighm antibody [RMM-1] {FITC} (STJA0001033)

STJA0001033

GENERAL INFORMATION

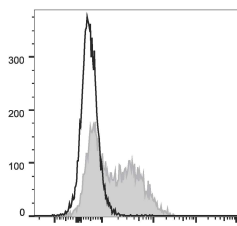
Product Type	Primary antibodies
Short Description	Rat monoclonal antibody anti-Immunoglobulin heavy constant mu is suitable for use in Flow Cytometry research applications.
Applications	FC
Host/Source	Rat
Reactivity	Mouse

PRODUCT PROPERTIES

Clonality	Monoclonal
Clone ID	RMM-1
Concentration	
Conjugation	FITC
Purification	
Dilution Range	
Formulation	PBS with 0.05% Proclin300, 1% BSA
Isotype	IgG2ak
Storage Instruction	Recommend storing between 2-8°C and protecting from prolonged exposure to light. Do not freeze this product.

TARGET INFORMATION

Gene ID	NA
Gene Symbol	Ighm
Uniprot ID	IGHM_MOUSE
Immunogen	
Immunogen Region	
Specificity	
Immunogen Sequence	



C57BL/6 murine splenocytes were stained with Anti-IgM antibody (STJA0001033) (filled gray histogram). Unstained splenocytes (empty black histogram) were used as control.

This product is suitable for in-vitro studies under the RESEARCH USE ONLY [RUO] licence. This product must not be used as for diagnostic or other medical purposes.
 St John's Laboratory Ltd, Knowledge Dock Business Centre, University Way, London, E16 2RD | Tel: 0208 223 3081