

## Anti-CD150/Slamf1 antibody [TC15-12F12.2] {APC} (STJA0000988)

STJA0000988

### GENERAL INFORMATION

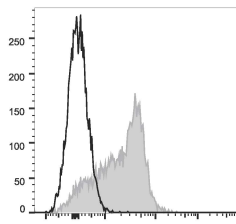
|                          |   |
|--------------------------|---|
| <b>Product Type</b>      | Primary antibodies  |
| <b>Short Description</b> | Rat monoclonal antibody anti-Signaling lymphocytic activation molecule is suitable for use in Flow Cytometry research applications. |
| <b>Applications</b>      | FC  |
| <b>Host/Source</b>       | Rat   |
| <b>Reactivity</b>        | Mouse   |

### PRODUCT PROPERTIES

|                            |  |
|----------------------------|--|
| <b>Clonality</b>           | Monoclonal   |
| <b>Clone ID</b>            | TC15-12F12.2   |
| <b>Concentration</b>       | 0.2 mg/mL  |
| <b>Conjugation</b>         | APC  |
| <b>Purification</b>        |  |
| <b>Dilution Range</b>      |  |
| <b>Formulation</b>         | PBS with 0.05% Proclin300, 1% BSA  |
| <b>Isotype</b>             | IgG2a, lambda  |
| <b>Storage Instruction</b> | Recommend storing between 2-8°C and protecting from prolonged exposure to light. Do not freeze this product. |

### TARGET INFORMATION

|                           |             |
|---------------------------|-------------|
| <b>Gene ID</b>            | 27218       |
| <b>Gene Symbol</b>        | Slamf1      |
| <b>Uniprot ID</b>         | SLAF1_MOUSE |
| <b>Immunogen</b>          |             |
| <b>Immunogen Region</b>   |             |
| <b>Specificity</b>        |             |
| <b>Immunogen Sequence</b> |             |



C57BL/6 murine splenocytes were stained with Anti-CD150 antibody (STJA0000988) [Used at 0.02 µg/10<sup>6</sup> cells dilution] (filled gray histogram). Unstained splenocytes (empty black histogram) were used as control.

This product is suitable for in-vitro studies under the RESEARCH USE ONLY [RUO] licence. This product must not be used as for diagnostic or other medical purposes.  
 St John's Laboratory Ltd, Knowledge Dock Business Centre, University Way, London, E16 2RD | Tel: 0208 223 3081