

Anti-IGHM antibody [MHM-88] {PE} (STJA0000975)

STJA0000975

GENERAL INFORMATION

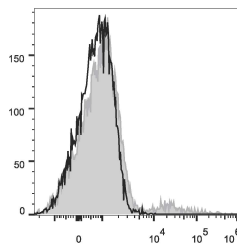
Product Type	Primary antibodies
Short Description	Mouse monoclonal antibody anti-Immunoglobulin heavy constant mu is suitable for use in Flow Cytometry research applications.
Applications	FC
Host/Source	Mouse
Reactivity	Human

PRODUCT PROPERTIES

Clonality	Monoclonal
Clone ID	MHM-88
Concentration	
Conjugation	PE
Purification	
Dilution Range	
Formulation	PBS with 0.05% Proclin300, 1% BSA
Isotype	IgG1k
Storage Instruction	Recommend storing between 2-8°C and protecting from prolonged exposure to light. Do not freeze this product.

TARGET INFORMATION

Gene ID	NA
Gene Symbol	IGHM
Uniprot ID	IGHM_HUMAN
Immunogen	
Immunogen Region	
Specificity	
Immunogen Sequence	



Human peripheral blood lymphocytes were stained with Anti-IgM antibody (STJA0000975) (filled gray histogram) or Mouse IgG1 Isotype Control PE (empty black histogram).

This product is suitable for in-vitro studies under the RESEARCH USE ONLY [RUO] licence. This product must not be used as for diagnostic or other medical purposes.
 St John's Laboratory Ltd, Knowledge Dock Business Centre, University Way, London, E16 2RD | Tel: 0208 223 3081