

Anti-CD161/KLRB1 antibody [HP-3G10] {APC} (STJA0000941)

STJA0000941

GENERAL INFORMATION

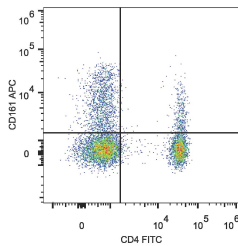
Product Type	Primary antibodies
Short Description	Mouse monoclonal antibody anti-Killer cell lectin-like receptor subfamily B member 1 is suitable for use in Flow Cytometry research applications.
Applications	FC
Host/Source	Mouse
Reactivity	Human

PRODUCT PROPERTIES

Clonality	Monoclonal
Clone ID	HP-3G10
Concentration	
Conjugation	APC
Purification	
Dilution Range	
Formulation	PBS with 0.05% Proclin300, 1% BSA
Isotype	IgG1k
Storage Instruction	Recommend storing between 2-8°C and protecting from prolonged exposure to light. Do not freeze this product.

TARGET INFORMATION

Gene ID	3820
Gene Symbol	KLRB1
Uniprot ID	KLRB1_HUMAN
Immunogen	
Immunogen	
Region	
Specificity	
Immunogen	
Sequence	



Human peripheral blood lymphocytes were stained with Anti-Human CD4 Monoclonal Antibody (FITC Conjugated) and Anti-CD161 antibody (STJA0000941)

This product is suitable for in-vitro studies under the RESEARCH USE ONLY [RUO] licence. This product must not be used as for diagnostic or other medical purposes.
 St John's Laboratory Ltd, Knowledge Dock Business Centre, University Way, London, E16 2RD | Tel: 0208 223 3081