

## Anti-CD161/KLRB1 antibody [HP-3G10] {FITC} (STJA0000940)

STJA0000940

### GENERAL INFORMATION

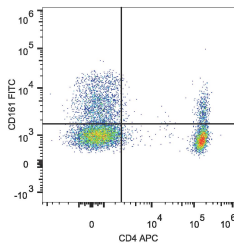
<b>Product Type</b>	Primary antibodies
<b>Short Description</b>	Mouse monoclonal antibody anti-Killer cell lectin-like receptor subfamily B member 1 is suitable for use in Flow Cytometry research applications.
<b>Applications</b>	FC
<b>Host/Source</b>	Mouse
<b>Reactivity</b>	Human

### PRODUCT PROPERTIES

<b>Clonality</b>	Monoclonal
<b>Clone ID</b>	HP-3G10
<b>Concentration</b>	
<b>Conjugation</b>	FITC
<b>Purification</b>	
<b>Dilution Range</b>	
<b>Formulation</b>	PBS with 0.05% Proclin300, 1% BSA
<b>Isotype</b>	IgG1k
<b>Storage Instruction</b>	Recommend storing between 2-8°C and protecting from prolonged exposure to light. Do not freeze this product.

### TARGET INFORMATION

<b>Gene ID</b>	<a href="#">3820</a>
<b>Gene Symbol</b>	<a href="#">KLRB1</a>
<b>Uniprot ID</b>	<a href="#">KLRB1_HUMAN</a>
<b>Immunogen</b>	
<b>Immunogen</b>	
<b>Region</b>	
<b>Specificity</b>	
<b>Immunogen</b>	
<b>Sequence</b>	



Human peripheral blood lymphocytes were stained with Anti-Human CD4 Monoclonal Antibody (APC Conjugated) and Anti-CD161 antibody (STJA0000940)

This product is suitable for in-vitro studies under the RESEARCH USE ONLY [RUO] licence. This product must not be used as for diagnostic or other medical purposes.  
 St John's Laboratory Ltd, Knowledge Dock Business Centre, University Way, London, E16 2RD | Tel: 0208 223 3081