

## Anti-Ly6C antibody [Monts 1] {FITC} (STJA0000746)

STJA0000746

### GENERAL INFORMATION

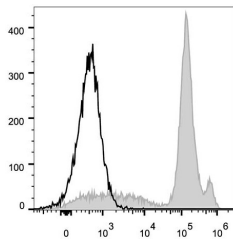
<b>Product Type</b>	Primary antibodies
<b>Short Description</b>	Rat monoclonal antibody anti-Ly6C is suitable for use in Flow Cytometry research applications.
<b>Applications</b>	FC
<b>Host/Source</b>	Rat
<b>Reactivity</b>	Mouse

### PRODUCT PROPERTIES

<b>Clonality</b>	Monoclonal
<b>Clone ID</b>	Monts 1
<b>Concentration</b>	0.5 mg/mL
<b>Conjugation</b>	FITC
<b>Purification</b>	
<b>Dilution Range</b>	
<b>Formulation</b>	PBS with 0.05% Proclin300, 1% BSA
<b>Isotype</b>	IgG2ak
<b>Storage Instruction</b>	Recommend storing between 2-8°C and protecting from prolonged exposure to light. Do not freeze this product.

### TARGET INFORMATION

<b>Gene ID</b>	<a href="#">17067</a>
<b>Gene Symbol</b>	<a href="#">Ly6c1</a>
<b>Uniprot ID</b>	<a href="#">LY6C1_MOUSE</a>
<b>Immunogen</b>	
<b>Immunogen Region</b>	
<b>Specificity</b>	
<b>Immunogen Sequence</b>	



C57BL/6 murine bone marrow cells were stained with Anti-Ly6C antibody (STJA0000746) [Used at 0.2 µg/10<sup>6</sup> cells dilution] (filled gray histogram). Unstained bone marrow cells (empty black histogram) were used as control.

---

This product is suitable for in-vitro studies under the RESEARCH USE ONLY [RUO] licence. This product must not be used as for diagnostic or other medical purposes.  
St John's Laboratory Ltd, Knowledge Dock Business Centre, University Way, London, E16 2RD | Tel: 0208 223 3081