

Anti-CD10/MME antibody [CB-CALLA] {PE/Cyanine7} (STJA0000408)

STJA0000408

GENERAL INFORMATION

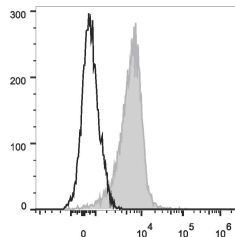
Product Type	Primary antibodies
Short Description	Mouse monoclonal antibody anti-Nepriylsin is suitable for use in Flow Cytometry research applications.
Applications	FC
Host/Source	Mouse
Reactivity	Human

PRODUCT PROPERTIES

Clonality	Monoclonal
Clone ID	CB-CALLA
Concentration	
Conjugation	PE/Cyanine7
Purification	
Dilution Range	
Formulation	PBS with 0.05% Proclin300, 1% BSA
Isotype	IgG1k
Storage Instruction	Recommend storing between 2-8°C and protecting from prolonged exposure to light. Do not freeze this product.

TARGET INFORMATION

Gene ID	4311
Gene Symbol	MME
Uniprot ID	NEP_HUMAN
Immunogen	
Immunogen Region	
Specificity	
Immunogen Sequence	



Human peripheral blood granulocytes were stained with Anti-CD10 antibody (STJA0000408) (filled gray histogram). Unstained granulocytes (empty black histogram) were used as control.

This product is suitable for in-vitro studies under the RESEARCH USE ONLY [RUO] licence. This product must not be used as for diagnostic or other medical purposes.
 St John's Laboratory Ltd, Knowledge Dock Business Centre, University Way, London, E16 2RD | Tel: 0208 223 3081