

Anti-Adgre1 antibody [Cl:A3-1] {PE} (STJA0000123)

STJA0000123

GENERAL INFORMATION

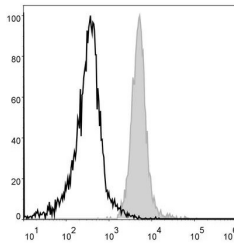
Product Type	Primary antibodies
Short Description	Rat monoclonal antibody anti-Adhesion G protein-coupled receptor E1 is suitable for use in Flow Cytometry research applications.
Applications	FC
Host/Source	Rat
Reactivity	Mouse

PRODUCT PROPERTIES

Clonality	Monoclonal
Clone ID	Cl:A3-1
Concentration	0.2 mg/mL
Conjugation	PE
Purification	
Dilution Range	
Formulation	PBS with 0.05% Proclin300, 1% BSA
Isotype	IgG2bk
Storage Instruction	Recommend storing between 2-8°C and protecting from prolonged exposure to light. Do not freeze this product.

TARGET INFORMATION

Gene ID	13733
Gene Symbol	Adgre1
Uniprot ID	AGRE1_MOUSE
Immunogen	
Immunogen Region	
Specificity	
Immunogen Sequence	



Mouse abdominal macrophages elicited by starch broth were stained with Anti-F4/80 antibody (STJA0000123) [Used at 0.2 µg/10⁶ cells dilution] (filled gray histogram). Unstained macrophages (blank black histogram) were used as control.

This product is suitable for in-vitro studies under the RESEARCH USE ONLY [RUO] licence. This product must not be used as for diagnostic or other medical purposes.
 St John's Laboratory Ltd, Knowledge Dock Business Centre, University Way, London, E16 2RD | Tel: 0208 223 3081