

Anti-Adgre1 antibody [Cl:A3-1] {PerCP/Cyanine5.5} (STJA0000119)

STJA0000119

GENERAL INFORMATION

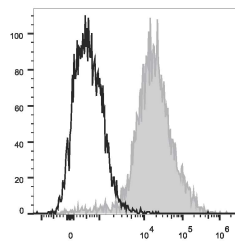
Product Type	Primary antibodies
Short Description	Rat monoclonal antibody anti-Adhesion G protein-coupled receptor E1 is suitable for use in Flow Cytometry research applications.
Applications	FC
Host/Source	Rat
Reactivity	Mouse

PRODUCT PROPERTIES

Clonality	Monoclonal
Clone ID	Cl:A3-1
Concentration	
Conjugation	PerCP/Cyanine5.5
Purification	
Dilution Range	
Formulation	PBS with 0.05% Proclin300, 1% BSA
Isotype	IgG2bk
Storage Instruction	Recommend storing between 2-8°C and protecting from prolonged exposure to light. Do not freeze this product.

TARGET INFORMATION

Gene ID	13733
Gene Symbol	Adgre1
Uniprot ID	AGRE1_MOUSE
Immunogen	
Immunogen Region	
Specificity	
Immunogen Sequence	



Mouse abdominal macrophages elicited by starch broth were stained with Anti-F4/80 antibody (STJA0000119) (filled gray histogram). Unstained macrophages (blank black histogram) were used as control.