

## Anti-Klr1c antibody [PK136] {AF647} (STJA0000034)

STJA0000034

### GENERAL INFORMATION

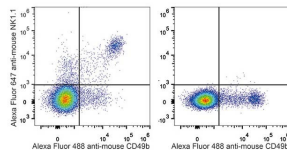
<b>Product Type</b>	Primary antibodies
<b>Short Description</b>	Mouse monoclonal antibody anti-Killer cell lectin-like receptor subfamily B member 1C is suitable for use in Flow Cytometry research applications.
<b>Applications</b>	FC
<b>Host/Source</b>	Mouse
<b>Reactivity</b>	Mouse

### PRODUCT PROPERTIES

<b>Clonality</b>	Monoclonal
<b>Clone ID</b>	PK136
<b>Concentration</b>	
<b>Conjugation</b>	AF647
<b>Purification</b>	
<b>Dilution Range</b>	
<b>Formulation</b>	PBS with 0.05% Proclin300, 1% BSA
<b>Isotype</b>	IgG2ak
<b>Storage Instruction</b>	Recommend storing between 2-8°C and protecting from prolonged exposure to light. Do not freeze this product.

### TARGET INFORMATION

<b>Gene ID</b>	<a href="#">17059</a>
<b>Gene Symbol</b>	<a href="#">Klr1c</a>
<b>Uniprot ID</b>	<a href="#">KLRBC_MOUSE</a>
<b>Immunogen</b>	
<b>Immunogen</b>	
<b>Region</b>	
<b>Specificity</b>	
<b>Immunogen</b>	
<b>Sequence</b>	



C57BL/6 murine splenocytes were stained with Anti-CD161/NK1.1 antibody (STJA0000034) and Anti-Mouse CD49b Monoclonal Antibody (AF488 Conjugated) (left). Splenocytes stained with Anti-Mouse CD49b Monoclonal Antibody (AF488 Conjugated) (right) were used as control.

This product is suitable for in-vitro studies under the RESEARCH USE ONLY [RUO] licence. This product must not be used as for diagnostic or other medical purposes.  
 St John's Laboratory Ltd, Knowledge Dock Business Centre, University Way, London, E16 2RD | Tel: 0208 223 3081