

Anti-Klr1c antibody [PK136] {FITC} (STJA0000026)

STJA0000026

GENERAL INFORMATION

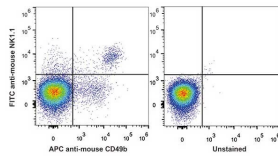
Product Type	Primary antibodies
Short Description	Mouse monoclonal antibody anti-Killer cell lectin-like receptor subfamily B member 1C is suitable for use in Flow Cytometry research applications.
Applications	FC
Host/Source	Mouse
Reactivity	Mouse

PRODUCT PROPERTIES

Clonality	Monoclonal
Clone ID	PK136
Concentration	
Conjugation	FITC
Purification	
Dilution Range	
Formulation	PBS with 0.05% Proclin300, 1% BSA
Isotype	IgG2ak
Storage Instruction	Recommend storing between 2-8°C and protecting from prolonged exposure to light. Do not freeze this product.

TARGET INFORMATION

Gene ID	17059
Gene Symbol	Klr1c
Uniprot ID	KLRBC_MOUSE
Immunogen	
Immunogen	
Region	
Specificity	
Immunogen	
Sequence	



C57BL/6 murine splenocytes were stained with Anti-CD161/NK1.1 antibody (STJA0000026) and Anti-Mouse CD49b Monoclonal Antibody (APC Conjugated) (Left). Unstained splenocytes were used as control (Right).

This product is suitable for in-vitro studies under the RESEARCH USE ONLY [RUO] licence. This product must not be used as for diagnostic or other medical purposes.
 St John's Laboratory Ltd, Knowledge Dock Business Centre, University Way, London, E16 2RD | Tel: 0208 223 3081