

Anti-CEBPB antibody (150-230) (STJ99653)

STJ99653

GENERAL INFORMATION

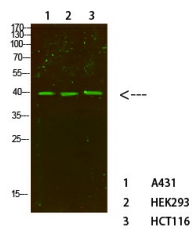
Product Type	Primary antibodies
Short Description	Rabbit polyclonal antibody anti-Ccaat/Enhancer-Binding Protein Beta (150-230) is suitable for use in Western Blot and ELISA research applications.
Applications	WB, ELISA
Host/Source	Rabbit
Reactivity	Human, Mouse, Rat

PRODUCT PROPERTIES

Clonality	Polyclonal
Clone ID	
Concentration	1 mg/mL
Conjugation	Unconjugated
Purification	The antibody was affinity-purified from rabbit anti-serum by affinity-chromatography.
Dilution Range	WB 1:500-2000 ELISA 1:10000-20000
Formulation	PBS, 50% Glycerol, 0.5% BSA and 0.02% Sodium Azide.
Isotype	IgG
Storage	Store at -20°C for up to 1 year from the date of receipt, and avoid repeat freeze-thaw cycles.
Instruction	

TARGET INFORMATION

Gene ID	1051
Gene Symbol	CEBPB
Uniprot ID	CEBPB_HUMAN
Immunogen	Synthesized peptide derived from C/EBP Beta. at amino acid range: 150-230
Immunogen Region	150-230
Specificity	CEBPB polyclonal antibody (Ccaat/Enhancer-Binding Protein Beta) binds to endogenous Ccaat/Enhancer-Binding Protein Beta at the amino acid region 150-230.
Immunogen Sequence	



Western blot analysis of various cells using primary antibody diluted at 1:500 (4°C overnight). Secondary antibody: Goat Anti-rabbit IgG IRDye 800 (diluted at 1:5000, 25°C, 1 hour)