

Anti-ATG4A antibody (STJ99646)

STJ99646

GENERAL INFORMATION

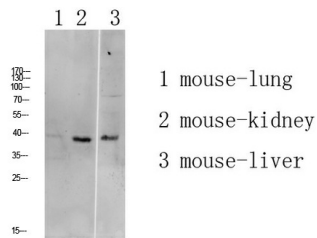
Product Type	Primary antibodies
Short Description	Rabbit polyclonal antibody anti-Cysteine Protease Atg4a is suitable for use in Western Blot and ELISA research applications.
Applications	WB, ELISA
Host/Source	Rabbit
Reactivity	Human, Mouse, Rat

PRODUCT PROPERTIES

Clonality	Polyclonal
Clone ID	
Concentration	1 mg/mL
Conjugation	Unconjugated
Purification	The antibody was affinity-purified from rabbit anti-serum by affinity-chromatography.
Dilution Range	WB 1:500-2000 ELISA 1:10000-20000
Formulation	PBS, 50% Glycerol, 0.5% BSA and 0.02% Sodium Azide.
Isotype	IgG
Storage Instruction	Store at -20°C for up to 1 year from the date of receipt, and avoid repeat freeze-thaw cycles.

TARGET INFORMATION

Gene ID	115201
Gene Symbol	ATG4A
Uniprot ID	ATG4A_HUMAN
Immunogen	Synthesized peptide derived from human ATG4A Polyclonal
Immunogen Region	
Specificity	ATG4A polyclonal antibody (Cysteine Protease Atg4a) binds to endogenous Cysteine Protease Atg4a.
Immunogen Sequence	



Western blot analysis of mouse-liver lysate, antibody was diluted at 1000. Secondary antibody was diluted at 1:20000

This product is suitable for in-vitro studies under the RESEARCH USE ONLY [RUO] licence. This product must not be used as for diagnostic or other medical purposes.
St John's Laboratory Ltd, Knowledge Dock Business Centre, University Way, London, E16 2RD | Tel: 0208 223 3081