

Anti-CLU antibody (STJ99644)

STJ99644

GENERAL INFORMATION

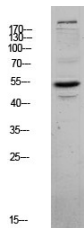
Product Type	Primary antibodies
Short Description	Rabbit polyclonal antibody anti-Clusterin is suitable for use in Western Blot and ELISA research applications.
Applications	WB, ELISA
Host/Source	Rabbit
Reactivity	Human, Mouse, Rat

PRODUCT PROPERTIES

Clonality	Polyclonal
Clone ID	
Concentration	1 mg/mL
Conjugation	Unconjugated
Purification	The antibody was affinity-purified from rabbit anti-serum by affinity-chromatography.
Dilution Range	WB 1:500-2000 ELISA 1:10000-20000
Formulation	PBS, 50% Glycerol, 0.5% BSA and 0.02% Sodium Azide.
Isotype	IgG
Storage Instruction	Store at -20°C for up to 1 year from the date of receipt, and avoid repeat freeze-thaw cycles.

TARGET INFORMATION

Gene ID	1191
Gene Symbol	CLU
Uniprot ID	CLUS_HUMAN
Immunogen	Synthesized peptide derived from human CLUS Polyclonal
Immunogen Region	
Specificity	CLU polyclonal antibody (Clusterin) binds to endogenous Clusterin.
Immunogen Sequence	



Western blot analysis of MCF-7 lysate, antibody was diluted at 1000. Secondary antibody was diluted at 1:20000